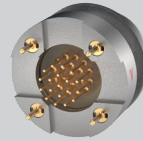
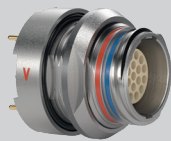
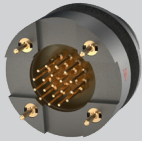
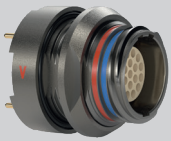


M SERIES VACUUMTIGHT



Vacuumtight

-55° to +150°C

PCB optimized

LEMO's new HY vacuumtight model with extended temperature range

LEMO is expanding its field-proven M series with a new vacuumtight model, named HY, and available in all sizes and low voltage configurations. This new fixed socket model has been specifically designed for all applications requiring vacuumtight integrations in harsh environments.

Thanks to an innovative potting material the new HY model is enabling vacuumtight sealing with ultra low leak rates over a broad temperature range.

It also integrates optimized PCB tails enabling easier PCB routings even on high density configurations. The ground connection also has been improved and now offers the possibility to use either standard ground pins or special anti vibration threaded holes for "screw through" PCB fixation.

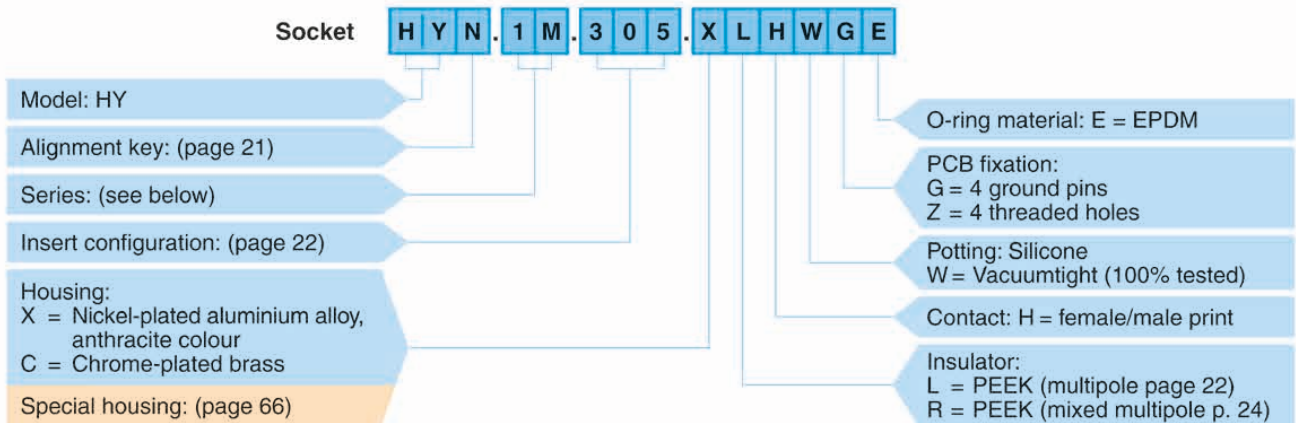
This new addition to the M series lineup is providing customers with the highest density ratchet coupling connectors on the market where vacuumtight integrations are required. The ultra low leak rate coupled with its wide temperature range allow for unmatched performance in optical enclosures or high-altitude applications.



Product safety notice & disclaimers:

Please read and follow all instructions specified on <https://www.lemo.com/en/about-lemo/product-safety-notice-and-disclaimers>

Part numbering system



HYN.1M.305.XLHWGE = socket, nut fixing, with key (N), 1M series, multipole type with 5 contacts, outer shell in anthracite nickel-plated aluminium alloy, PEEK insulator, female print contacts, vacuumtight, with 4 ground pins and a EPDM o-ring.

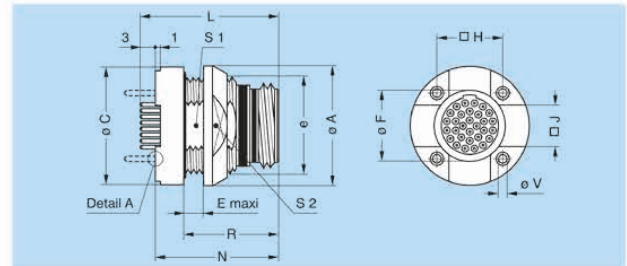
Environmental performance

Characteristics	Value	Standard
Operating temperature	-65°C/+180°C	EIA-364-32 1)

Characteristics	Value	Standard
Leakage rate	< 10 ⁻⁷ mbar·l·s ⁻¹	IEC 60512-2-17 test Qk

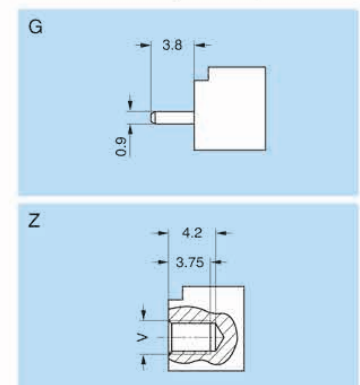
Note: 1) Method A, condition IV (5 cycles).

HY • Socket, nut fixing, key (N or H to X), printed circuit, vacuumtight (back panel mounting)



Reference		Dimensions (mm)												
Model	Series	A	C	e	E	F	H	J	L	N	R	S1	S2	V
HY•	MM	14.0	13.8	M10x0.50	4.0	5.7	6.35	3.0	19.1	16.1	10.5	9.0	11.0	M2x0.4
HY•	0M	17.0	16.8	M13x0.75	5.3	7.8	8.89	5.0	22.4	19.4	13.8	11.5	14.0	M2x0.4
HY•	1M	18.0	17.8	M14x1.00	5.3	8.8	10.16	5.5	22.4	19.4	13.8	12.5	16.0	M2x0.4
HY•	2M	21.0	20.8	M17x1.00	5.3	11.8	11.43	7.0	22.4	19.4	13.8	15.5	18.0	M2x0.4
HY•	3M	23.0	22.8	M19x1.00	5.3	13.8	12.70	8.0	22.4	19.4	13.8	17.5	20.0	M2x0.4
HY•	TM	27.0	25.8	M22x1.00	4.5	15.2	13.97	8.7	26.0	23.0	17.4	20.5	23.0	M3x0.5
HY•	4M	29.0	27.8	M24x1.00	4.5	16.8	15.24	9.5	26.0	23.0	17.4	22.5	25.0	M3x0.5
HY•	LM	33.0	31.8	M28x1.00	4.5	20.8	17.78	11.5	26.0	23.0	17.4	26.5	29.0	M3x0.5
HY•	5M	38.0	36.8	M33x1.00	4.5	25.9	21.59	14.0	26.0	23.0	17.4	31.5	34.0	M3x0.5

PCB fixation (Detail A)



Note: special anti-vibration thread to be used with standard metric screws (not supplied).

Panel cut-out (page 59), PCB drilling pattern (page 62).

Discover the wide range of configurations in our catalog

