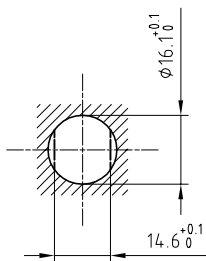


Outer shell	: Brass (UNS C38500)	Chrome plated (FS-QQ-C-320B)
Earthing crown	: Bronze (UNS C54400)	Nickel plated (FS-QQ-N-290A)
Insulator	: PEEK	-
Female-male contact	: Bronze (UNS C54400)	Gold plated (ISO 4523)
Other metallic parts	: Brass (UNS C38500)	Nickel plated (FS-QQ-N-290A)
Sealing resin	: Epoxy	-
O-rings	: FPM	-

Panel cut-out



Torque for mounting nut : 7 Nm

Fixed coupler , nut fixing , vacuumtight .
Series 1E , multipole (2)

ETUDE N° E1642

Echelle —	Dessiné	19.06.03	OVU / RMO
	Contrôle	19.06.03	RMO / CDE
	Modif.	00	19.06.03 / OVU



LEMO

CH-1024 Ecublens

SWH.1E.302.CLLPV