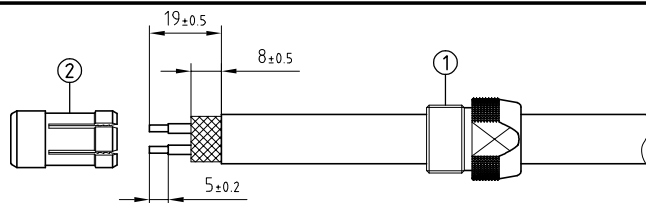
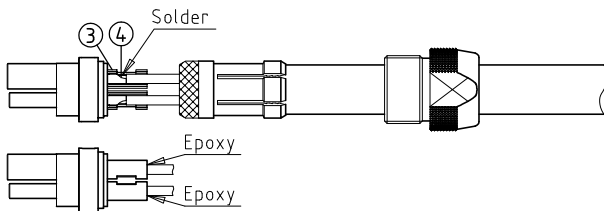


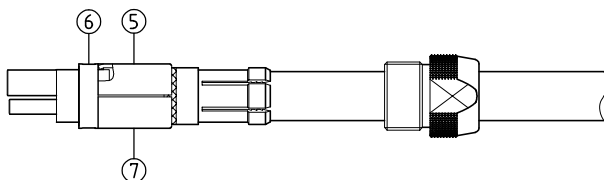
Outer shell	: Brass (UNS C38500)	Chrome plated (FS-QQ-C-320B)
Latch sleeve	: Brass (UNS C38500)	Nickel plated (FS-QQ-N-290A)
Collet nut	: Brass (UNS C38500)	Chrome plated (FS-QQ-C-320B)
Insulator	: PEEK	-
Male contact	: Brass (UNS C38500)	Gold plated (ISO 27874)
Female contact	: Bronze (UNS C54400)	Gold plated (ISO 27874)
Locking washer	: Bronze (UNS C52100)	Nickel plated (FS-QQ-N-290A)
Other insulating parts	: PEEK	-
Other metallic parts	: Brass (UNS C38500)	Nickel plated (FS-QQ-N-290A)
Label	: Polyester	Yellow



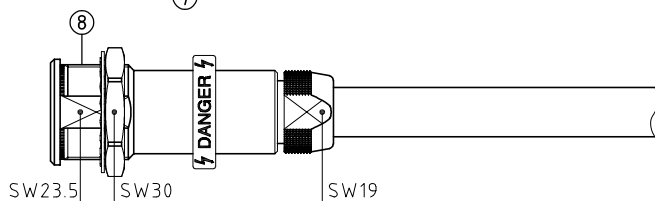
1. Strip the cable according to the given dimensions . Slide it into the collet nut ① and the collet ②.



2. Slide the cover tubes ③ over insulator and contacts as shown . In case of a screened cable , fold screen back over the extremity of the collet . Arrange the conductors avoiding to twist them . Fit conductor into contacts ④ and solder . Do not damage the cover tubes and verify that insulator and insulation remain clean . Turn cover tubes of 180 degrees and secure with epoxy .

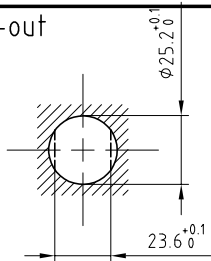


3. Locate the upper half ⑤ of the split insert carrier over the shoulder and key on the insert metal ring ⑥ then align and press together the other half ⑦ to form a complete cylinder . Push the collet against the insert carriers whilst checking that the screen is being clamped around the whole circumference and cut , if necessary , the excess screen .



4. Drill the panel hole and install the connector with the appropriate tool . Next slide the insulator assembly into the socket shell ⑧ and screw the collet nut with the appropriate tool and tighten to the maximum torque value of 8Nm .

Panel cut-out



Torque for mounting nut : 12 Nm

Fixed socket with nut fixing , with cable collet and nut .

Series 4S , (4) HV(φ2)

ETUDE N° E9253-E1244

Echelle	Dessiné	20.01.2020	OVU / NHA
	Contrôle	20.01.2020	NHA / CDE
	Modif.	00	20.01.2020/ OVU



LEMO

LEMO SA
Chemin des Champs-Courbes 28
1024 Ecublens - SWITZERLAND

Tel. (+41 21) 695 16 00
email : info@lemo.com
www.lemo.com

PSA.4S.434.CJLC__