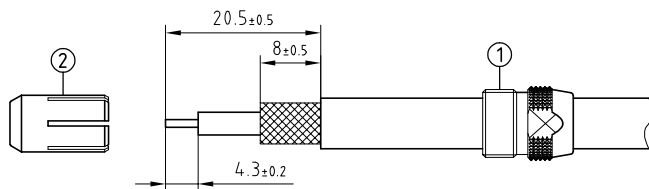
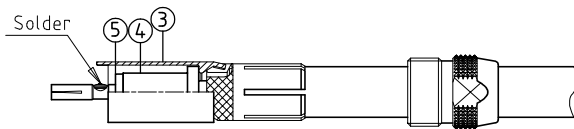


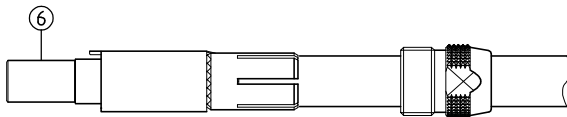
Outer shell	: Brass (UNS C38500)	Chrome plated (FS-QQ-C-320B)
Earthing crown	: Bronze (UNS C54400)	Gold plated (ISO 27874)
Collet nut	: Brass (UNS C38500)	Chrome plated (FS-QQ-C-320B)
Insulators	: PTFE	-
Female contact	: Cu-Be (UNS C17300)	Gold plated (ISO 27874)
Contact female washer	: PEEK	-
Locking washer	: Bronze (UNS C52100)	Nickel plated (FS-QQ-N-290A)
Other metallic parts	: Brass (UNS C38500)	Nickel plated (FS-QQ-N-290A)
Label	: Polyester	Yellow



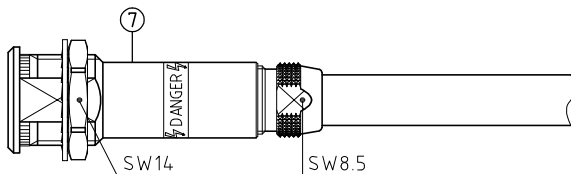
1. Strip the cable according to the given dimensions . Slide it into the collet nut ① and the collet ②.



2. In case of a screened cable , fold screen back over the extremity of the collet , check that the screen which is folded back over the collet is clear of the keyway . Slide the center-piece ③, the insulator sleeve ④, the contact ⑤ fully onto the cable until touches the dielectric and one can see the conductor in the contact hole . Solder the contact .

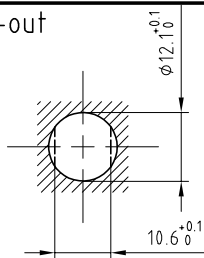


3. Slide the insulator ⑥ onto the contact . Align the key of the center-piece with the keyway in the collet and move them together whilst checking that the screen is being clamped being clamped around the whole circumference and cut , if necessary , the excess screen .



4. Drill the panel hole and install the connector with the appropriate tool . Next slide the insulator assembly into the socket shell ⑦ making sure that the key on the center-piece goes into the keyway inside the shell and screw the collet nut with the appropriate tool and tighten to the maximum value of 1,5Nm .

Panel cut-out



Torque for mounting nut : 4.5 Nm

Fixed socket with nut fixing , with cable collet and inner anti-rotating device .

Series 1S , (1) HV(φ1.3)

ETUDE N° E10518-E6405-E7195

Echelle	Dessiné	02.02.2012	OVU /JPBA
	Contrôle	12.10.2018	NHA /ATVI
	Modif.	01	12.10.2018 / OVU



**LEMO**

LEMO SA  
Chemin des Champs-Courbes 28  
1024 Ecublens - SWITZERLAND

Tel. (+41 21) 695 16 00  
email : info@lemo.com  
www.lemo.com

**PSA.1S.405.CTLC\_\_**