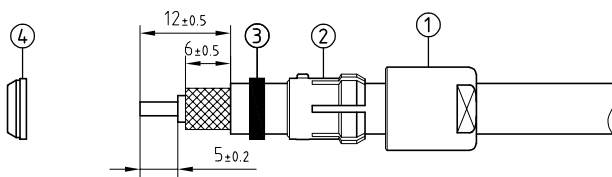
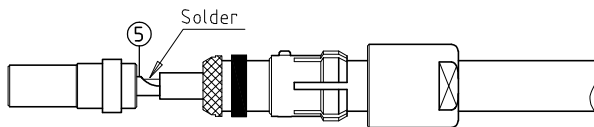


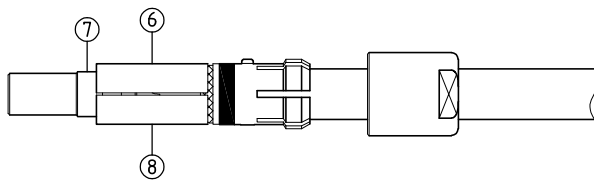
Outer shell	: Brass (UNS C38500)	Chrome plated (FS-QQ-C-320B)
Earthing crown	: Bronze (UNS C54400)	Gold plated (ISO 27874)
Collet nut	: Brass (UNS C38500)	Chrome plated (FS-QQ-C-320B)
Insulator	: PEEK	-
Female contact	: Bronze (UNS C54400)	Gold plated (ISO 27874)
Gland	: Silicone (SI)	-
Other metallic parts	: Brass (UNS C38500)	Nickel plated (FS-QQ-N-290A)
O-rings	: Silicone (MVQ)	-



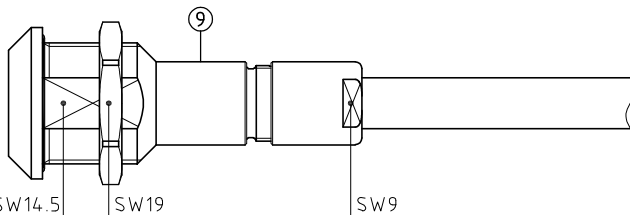
1. Strip the cable according to the given dimensions . (The end of the cable jacket must be cut properly) . Slide it into the collet nut①, the collet②, the gland③ and the earthing cone④.



2. In case of a screened cable , fold screen back over the extremity of the earthing cone . Fit the conductor into the subassembly with contact⑤ and solder . Verify that insulator and insulation remain clean .

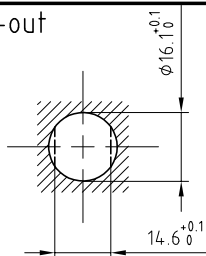


3. Locate the upper half⑥ of the split insert carrier over shoulder the insulator assembly⑦ and press together the other half⑧ to form a complete cylinder . Push the earthing cone against the insert carriers while checking that the screen is being clamped around the whole circumference and cut , if necessary , the excess screen . Push gland , the collet against the earthing cone . Push the cable forward and verify that cable jacket is located under the gland .



4. Drill the panel hole and install the connector with the appropriate tool . Next slide the insulator assembly into the socket shell⑨, until that the key of the collet is inserted into the keyway inside the shell . Screw the collet nut with the appropriate tool and tighten to the maximum torque value of 0.8 Nm .

Panel cut-out



Torque for mounting nut : 7 Nm

Flat spanners set

: DCP.91.001.TN

Fixed socket with nut fixing , with cable collet .
Series 1E , unipole φ2

Echelle	Dessiné	17.07.2019	OVU / NHA
	Contrôle	17.07.2019	NHA / ATVI
	Modif.	00	17.07.2019/ OVU

ETUDE N° E7176-E7194-E6041-E6387



LEMO

LEMO SA
Chemin des Champs-Courbes 28
1024 Ecublens - SWITZERLAND

Tel. (+41 21) 695 16 00
email : info@lemo.com
www.lemo.com

PSA.1E.120.CLLC __ __