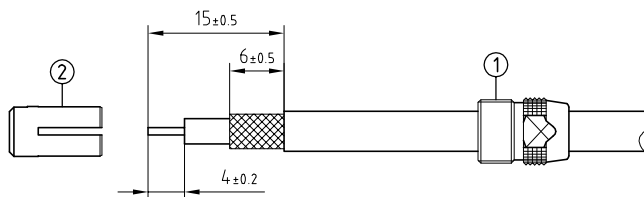
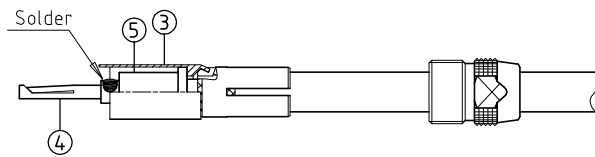


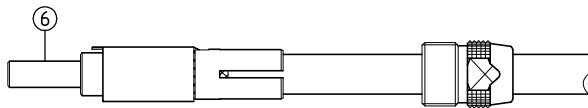
| | | |
|----------------------|-----------------------|------------------------------|
| Outer shell | : Brass (UNS C38500) | Chrome plated (FS-QQ-C-320B) |
| Earthing crown | : Bronze (UNS C54400) | Gold plated (ISO 27874) |
| Collet nut | : Brass (UNS C38500) | Chrome plated (FS-QQ-C-320B) |
| Insulators | : PTFE | - |
| Female contact | : Bronze (UNS C54400) | Gold plated (ISO 27874) |
| Locking washer | : Bronze (UNS C52100) | Nickel plated (FS-QQ-N-290A) |
| Other metallic parts | : Brass (UNS C38500) | Nickel plated (FS-QQ-N-290A) |
| Label | : Polyester | Yellow |



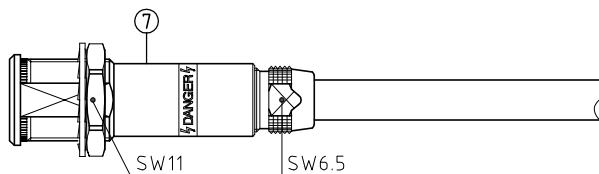
1. Strip the cable according to the given dimensions . Slide it into the collet nut (1) and the collet (2).



2. In case of a screened cable , fold screen back over the extremity of the collet . Slide the center-piece (3), the contact (4) fully onto the cable until the insulator sleeve (5) touches the dielectric and one can see the conductor in the contact hole . Solder the contact .

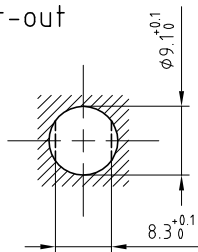


3. Slide the insulator (6) onto the contact . Check that the screen which is folded back over the collet is clear of the keyway . Align the key of the center-piece with the keyway in the collet and move them together whilst checking that the screen is being clamped around the whole circumference and cut , if necessary , the excess screen .



4. Drill the panel hole and install the connector with the appropriate tool . Next slide the insulator assembly into the socket shell (7) making sure that the key on the center-piece goes into the keyway inside the shell and screw the collet nut with the appropriate tool and tighten to the maximum torque value of 0.5Nm .

Panel cut-out



Torque for mounting nut : 2.5 Nm

Fixed socket with nut fixing , with cable collet .
Series 0S , (1) HV($\phi 0.9$)

ETUDE N° E7120-E7209

| | | | |
|---------|----------|------------|-----------------|
| Echelle | Dessiné | 09.06.2010 | OVU /JPBA |
| | Contrôle | 25.04.2016 | NHA /ATVI |
| | Modif. | 01 | 09.06.2010/ OVU |



LEMO

CH-1024 Ecublens

PSA.0S.403.CTLC __ __