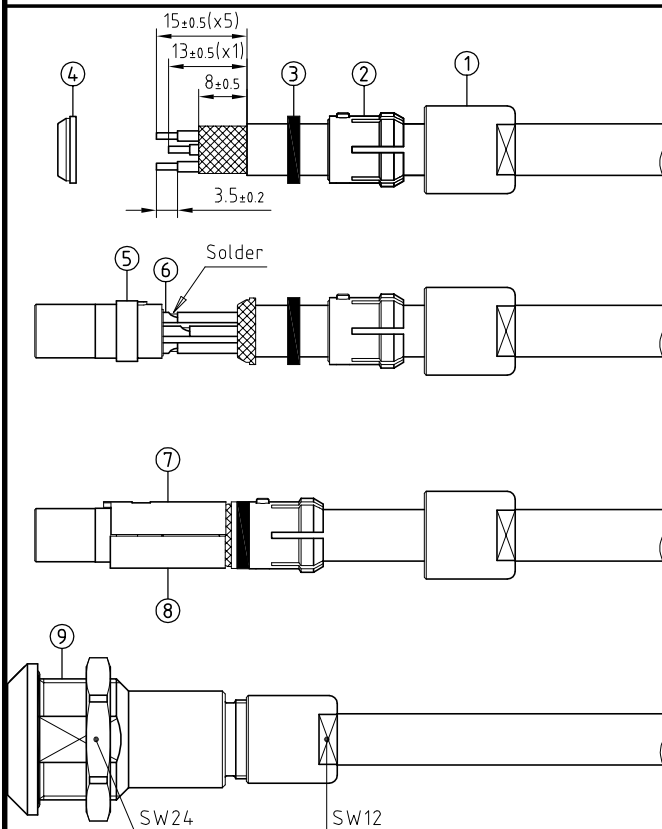


Outer shell	: Brass (UNS C38500)	Chrome plated (FS-QQ-C-320B)
Earthing crown	: Brass (UNS C38500)	Nickel plated (FS-QQ-N-290A)
Collet nut	: Brass (UNS C38500)	Chrome plated (FS-QQ-C-320B)
Insulator	: PEEK	-
Female contact	: Bronze (UNS C54400)	Gold plated (ISO 27874)
Gland	: Silicone (SI)	-
retaining ring	: Stainless steel (AISI304L)	-
Other metallic parts	: Brass (UNS C38500)	Nickel plated (FS-QQ-N-290A)
O-rings	: Silicone (MVQ)	-



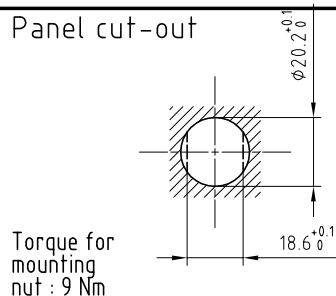
1. Strip the cable according to the given dimensions . (The end of the cable jacket must be cut properly) . Slide it into the collet nut①, the collet②, the gland③and the earthing cone④.

2. In case of a screened cable , fold screen back over the extremity of the earthing cone . Arrange the conductors according to the insulator⑤marking by avoiding to twist them . Fit conductor into the contacts⑥and solder . Verify that insulator and insulation remain clean .

3. Locate the slotted upper half⑦of the split insert carrier over the shoulder and key on the insulator then align and press together the other half⑧to form a complete cylinder . Push the earthing cone against the insert carriers whilst checking that the screen is being clamped around the whole circumference and cut , if necessary , the excess screen . Push the gland , and collet against the earthing cone . Push the cable forward and verify that cable jacket is located under the gland .

4. Next slide the socket shell⑨over the insulator assembly making sure that the key on the insert carrier goes into the keyway (under the color point) inside the shell . Locate the key of the collet into the slot of the shell . Finally screw the collet nut with the appropriate tool and tighten to the maximum torque value of 2Nm .

Panel cut-out



Torque for mounting nut : 9 Nm

Flat spanners set

: DCP.91.023.TN

**Straight socket with nut fixing , with key (G) , with antirotating cable collet and nut .**

**Series 2K , multipole (6)**

ETUDE N° E7077-E7176-E60/41-E6387

Echelle	Dessiné	13.12.2007	OVU / RMO
	Contrôle	21.11.2017	NHA / ATVI
	Modif.	01	21.11.2017 / OVU



**LEMO**

LEMO SA  
Chemin des Champs-Courbes 28  
1024 Ecublens - SWITZERLAND

Tel. (+41 21) 695 16 00  
email : info@lemo.com  
www.lemo.com

**PKG.2K.306.CLLC\_\_**