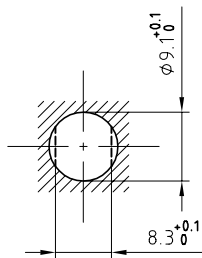


Outer shell	: Brass (UNS C38500)	Chrome plated (FS-QQ-C-320B)
Earthing crown	: Bronze (UNS C54400)	Nickel plated (FS-QQ-N-290A)
Collet nut	: Brass (UNS C38500)	Chrome plated (FS-QQ-C-320B)
Insulator	: PEEK	-
Notched nut	: Brass (UNS C38500)	Chrome plated (FS-QQ-C-320B)
Locking washer	: Bronze (UNS C52100)	Nickel plated (FS-QQ-N-290A)
Other metallic parts	: Brass (UNS C38500)	Nickel plated (FS-QQ-N-290A)

Panel cut-out



Torque for mounting nut : 2.5 Nm

Assembly instruction per customer drawing : PFG.0B.305.CYMD__

Straight socket , with two nuts , with key (G) , without collet , with extended insulator for crimp contact . Series 0B , multipole (5) (without contacts)

Echelle	Dessiné	24.04.97	XKO / JCHU
	Contrôle	12.04.00	RMO / JPBA
	Modif.	02	12.04.00 / OVU



LEMO

CH-1024 Ecublens

PFG.0B.305.CYZZ