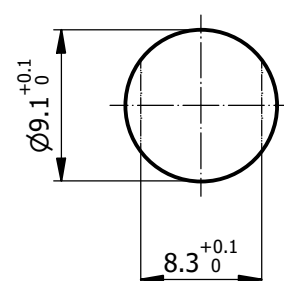
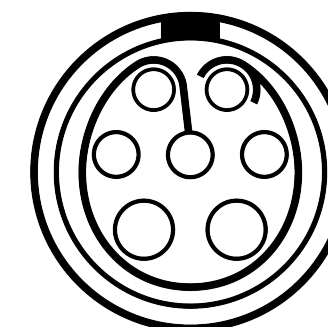
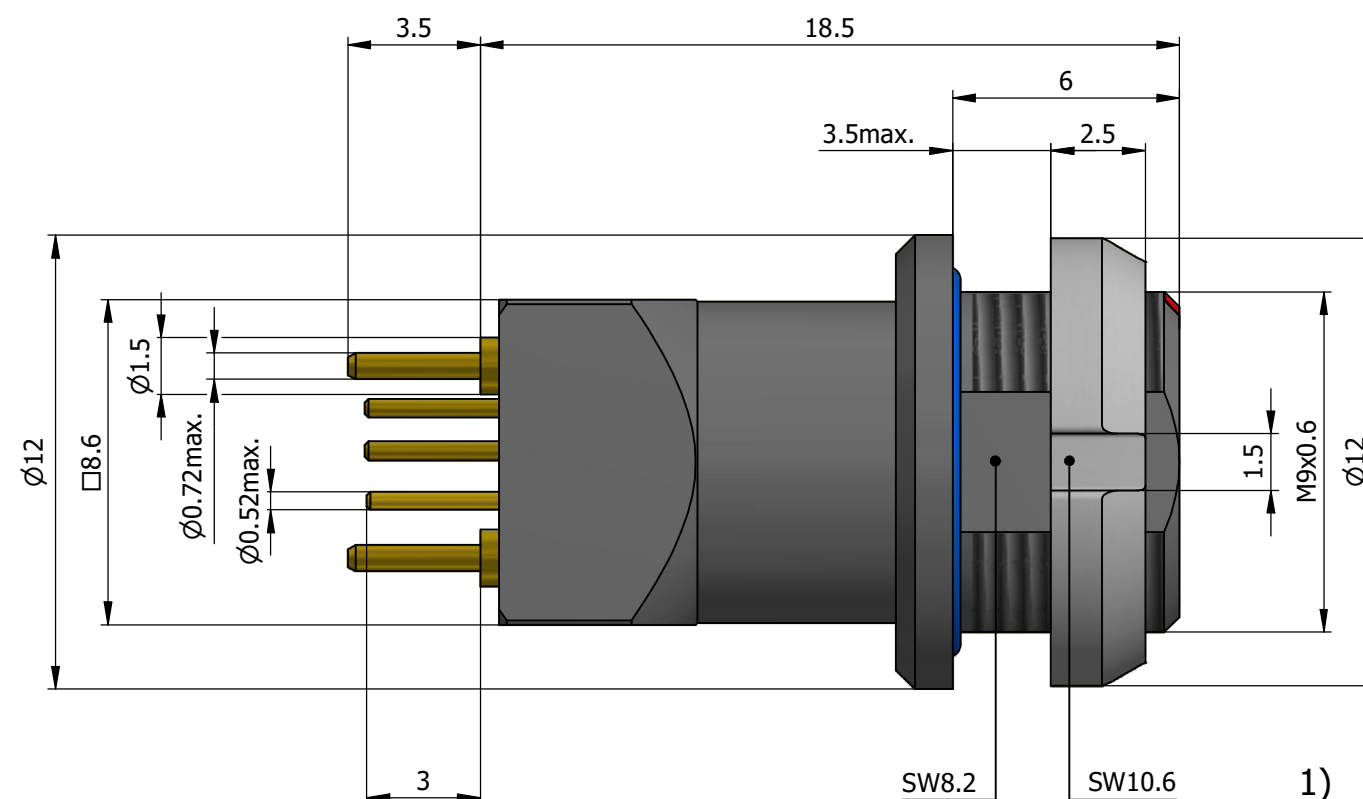
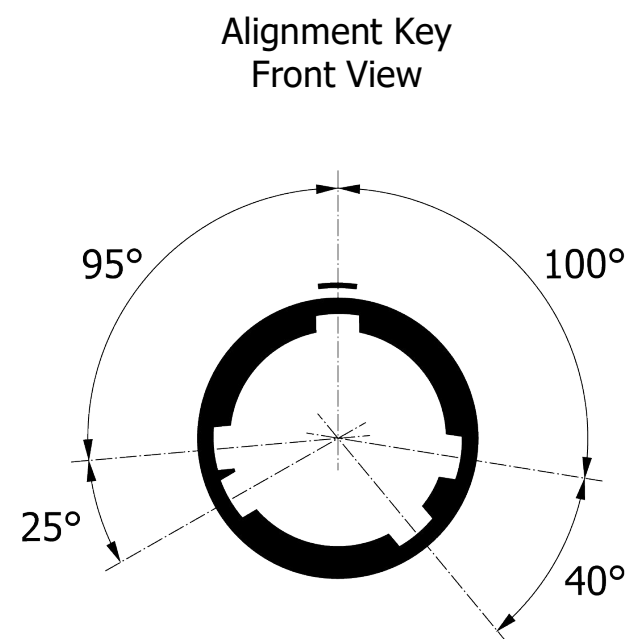
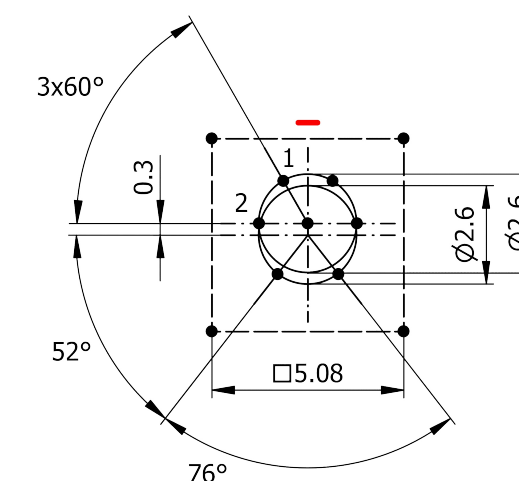
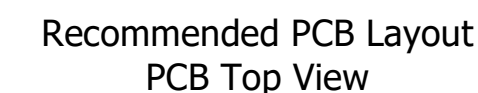


All dimensions are in millimeters (mm)



Mounting nut torque (Nm)
Metal shell = 2.5



Note:

1) This picture is generic and for illustrative purposes only, and may show different keying, materials, colour, finish, and contact configuration. Minor shape or feature variations to actual item may be present.

All additional information are documented on the datasheet (See below link or QR Code)
www.lemo.com/pdf/HXR.0D.307.FRNR.pdf



Fixed socket for PCB, nut fixing (back panel mounting)

Series 0D




LEMP

LEMO SA
Chemin des Champs-Courbes 28
1024 Ecublens - SWITZERLAND

Tel. (+41) 21 695 16 00
email : info@lemo.com
www.lemo.com

CD

Drawn	06.09.2024	MARI / MAR
Checked	03.10.2025	OBAR
Modified	03	03.10.2025 / MAR
	DO NOT SCALE DRAWING	

HXR.0D.307.FRNR

Model Alignment Key
Series Insert Config.
Housing Insulator Contact Variant
HXR . 0D . 307 . FRNR

HXR.0D.307.FRNR