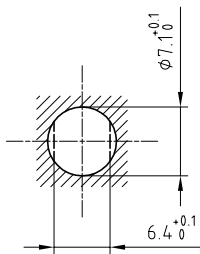


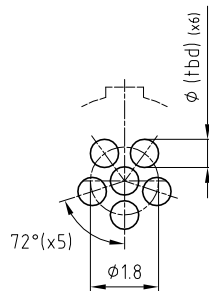
|                      |                       |                              |
|----------------------|-----------------------|------------------------------|
| Outer shell          | : Brass (UNS C38500)  | Chrome plated (FS-QQ-C-320B) |
| Earthing crown       | : Cu-Be (UNS C17300)  | Nickel plated (FS-QQ-N-290A) |
| Insulator            | : PEEK                | -                            |
| Female contact       | : Bronze (UNS C54400) | Gold plated (ISO 27874)      |
| Locking washer       | : Bronze (UNS C52100) | Nickel plated (FS-QQ-N-290A) |
| Other metallic parts | : Brass (UNS C38500)  | Nickel plated (FS-QQ-N-290A) |
| Sealing resin        | : Epoxy               | -                            |
| O-ring               | : Viton (FPM)         | -                            |

Panel cut-out



Torque for mounting nut : 2 Nm

PCB drilling pattern (Special customer)



Spanner for nut : DCA.91.149.0TN or  
Spanner for nut : DCG.91.149.0TN

Fixed socket , nut fixing , with key (G) , hexagonal flange , with flats on fixing thread , vacuumtight .

Series 03 , multipole (6)

ETUDE N° E9017-E10536

Echelle

Dessiné 08.03.2017 OVU / RMO

Contrôle 08.03.2017 RMO / CDE

Modif. 00 08.03.2017/ OVU



**LEMO**

CH-1024 Ecublens

**HWG.03.306.CLLPV**