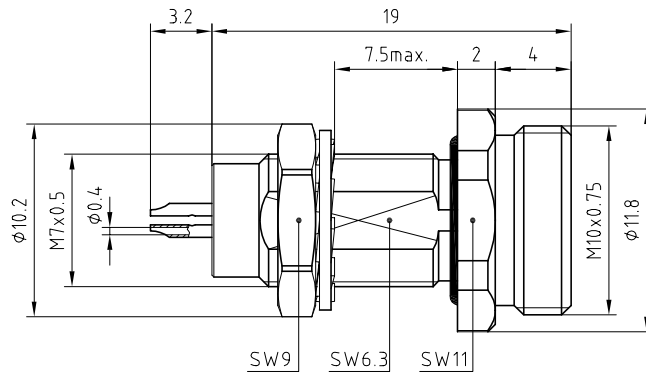
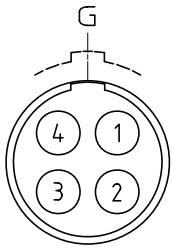


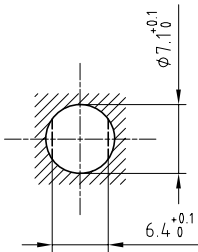
**PRELIMINARY**

L1-L2 Status  
Drawing subject to change



Outer shell	: Brass (UNS C38500)	Chrome plated (FS-QQ-C-320B)
Earthing crown	: Cu-Be (UNS C17300)	Nickel plated (FS-QQ-N-290A)
Insulator	: PEEK	-
Female contact	: Bronze (UNS C54400)	Gold plated (ISO 4523)
Locking washer	: Bronze (UNS C52100)	Nickel plated (FS-QQ-N-290A)
Other metallic parts	: Brass (UNS C38500)	Nickel plated (FS-QQ-N-290A)
Sealing resin	: Epoxy (STYCAST)	-
O-ring	: Viton (FPM)	-

Panel cut-out



Torque for mounting nut : 2 Nm

Spanner for nut : DCA.91.149.0TN or  
Spanner for nut : DCG.91.149.0TN

**Fixed socket , nut fixing , with key (G) , hexagonal flange , with flats on fixing thread , vacuumtight . Series 03 , multipole (4)**

ETUDE N°

Echelle —	Dessiné	25.10.07	OVU / RMO
	Contrôle	25.10.07	RMO / CDE
	Modif.	00	25.10.07 / OVU



**LEMO**

CH-1024 Ecublens

**HWG.03.304.CLLSV**