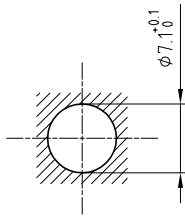


Outer shell	: Stainless steel (AISI316L)	-
Earthing crown	: Cu-Be (UNS C17300)	Nickel plated (FS-QQ-N-290A)
Insulator	: PEEK	-
Female contact	: Bronze (UNS C54400)	Gold plated (ISO 4523)
Hexagonal nut	: Brass (UNS C38500)	Nickel plated (FS-QQ-N-290A)
Locking washer	: Bronze (UNS C52100)	Nickel plated (FS-QQ-N-290A)
Other metallic part	: Stainless steel (AISI303)	-
Sealing resin	: Epoxy	-
O-ring	: Viton (FPM)	-

Panel cut-out



Torque for mounting nut : 2 Nm

Spanner for nut : DCA.91.14.9.0TN or
Spanner for nut : DCG.91.14.9.0TN

Fixed socket , nut fixing , with key (G) , hexagonal flange , no flats on fixing thread , vacuumtight . Series 03 , coaxial (50Ω)

ETUDE N° E9330-E9018

Echelle —	Dessiné	28.10.2011	OVU /JPBA
	Contrôle	28.10.2011	JPBA/ATVI
	Modif.	00	28.10.2011/ OVU



LEMO

CH-1024 Ecublens

HVR.03.250.SLLPV