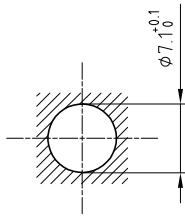


Outer shell	: Brass (UNS C38500)	Chrome plated (SAE AMS 2460)
Earthing crown	: Cu-Be (UNS C17300)	Nickel plated (SAE AMS QQ N 290)
Insulator	: PEEK	-
Female contact	: Bronze (UNS C54400)	Gold plated (ISO 27874)
Hexagonal nut	: Brass (UNS C38500)	Nickel plated (SAE AMS QQ N 290)
Locking washer	: Bronze (UNS C52100)	Nickel plated (SAE AMS QQ N 290)
Sealing resin	: Epoxy	-
O-ring	: Viton (FPM)	-

Panel cut-out



Torque for mounting nut : 2 Nm

Spanner for nut : DCA.91.149.0TN or  
Spanner for nut : DCG.91.149.0TN

**Fixed socket , nut fixing , round flange  
with blue strip , vacuumtight .  
Series 03 , coaxial (50Ω)**

ETUDE N° E3139-E9018-E7218

Echelle —	Dessiné	02.09.1988	PB / RMO
	Contrôle	29.04.2020	NHA / CDE
	Modif.	04	29.04.2020 / OVU



**LEMO**

LEMO SA  
Chemin des Champs-Courbes 28  
1024 Ecublens - SWITZERLAND

Tel. (+41 21) 695 16 00  
email : info@lemo.com  
www.lemo.com

**HVP.03.250.CLLPVB**