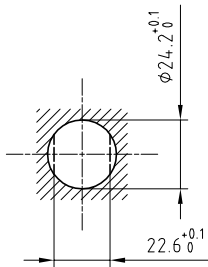


Outer shell	: Brass (UNS C38500)	Chrome plated (FS-QQ-C-320B)
Earthing crown	: Brass (UNS C38500)	Nickel plated (FS-QQ-N-290A)
Insulator	: PEEK	-
Female contacts ($\phi 0.7$) ($\phi 3$)	: Bronze (UNS C54400)	Gold plated (ISO 27874)
Hexagonal nut	: Brass (UNS C38500)	Nickel plated (FS-QQ-N-290A)
Other metallic part	: Brass (UNS C38500)	Nickel plated (FS-QQ-N-290A)
Sealing resin	: Epoxy	-
O-ring	: Viton (FPM)	-

Panel cut-out



Torque for mounting nut : 12 Nm

Fixed socket , nut fixing , with key (G) , round flange , vacuumtight .

Series 4W , (9) LV($\phi 0.7$) (4) LV($\phi 3$)

ETUDE N° E10545-E2130-E7128-E11025-E6041

Echelle	Dessiné	11.07.2018	OVU / NHA
	Contrôle	11.07.2018	NHA / ATVI
	Modif.	00	11.07.2018 / OVU



LEMO

LEMO SA
Chemin des Champs-Courbes 28
1024 Ecublens - SWITZERLAND

Tel. (+41 21) 695 16 00
email : info@lemo.com
www.lemo.com

HVG.4W.313.CRLPV