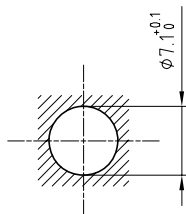


Outer shell	: Brass (UNS C38500)	Chrome plated (FS-QQ-C-320B)
Earthing crown	: Cu-Be (UNS C17300)	Nickel plated (FS-QQ-N-290A)
Insulator	: PEEK	-
Female contact	: Bronze (UNS C54400)	Gold plated (ISO 4523)
Locking washer	: Bronze (UNS C52100)	Nickel plated (FS-QQ-N-290A)
Other metallic parts	: Brass (UNS C38500)	Nickel plated (FS-QQ-N-290A)
Sealing resin	: Epoxy	-
O-ring	: Viton (FPM)	-

Panel cut-out



Torque for mounting nut : 2 Nm

Spanner for nut : DCA.91.149.0TN or
Spanner for nut : DCG.91.149.0TN

**Fixed socket , nut fixing , with key (G) , hexagonal flange , no flats on fixing thread , vacuumtight .
Series 03 , multipole (4)**

ETUDE N° E9561

Echelle

Dessiné 05.03.03 OVU / RMO

Contrôle 17.11.05 RMO / CDE

Modif. 01 17.11.05 / OVU



LEMO

CH-1024 Ecublens

HRG.03.304.CLLPV