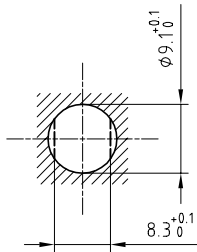


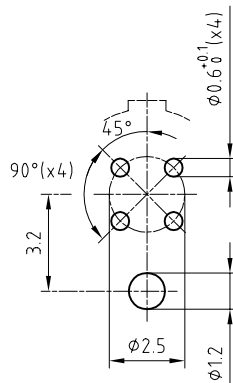
Outer shell	: Brass (UNS C38500)	Chrome plated (FS-QQ-C-320B)
Earthing crown	: Bronze (UNS C54400)	Nickel plated (FS-QQ-N-290A)
Insulator	: PEEK	-
Female contact	: Bronze (UNS C54400)	Gold plated (ISO 4523)
Notched nut	: Brass (UNS C38500)	Chrome plated (FS-QQ-C-320B)
Locking washer	: Bronze (UNS C52100)	Nickel plated (FS-QQ-N-290A)
Earthing tag	: Brass (UNS C38500)	Gold plated (ISO 4523)
Sealing resin	: Epoxy	-
O-ring	: Silicone (MVQ)	-

Panel cut-out



Torque for mounting nut : 2.5 Nm

PCB drilling pattern



Spanner for notched nut : DCH.91.121.PA

Fixed socket with earthing tag , nut fixing , with key (G) , watertight , for PCB . (Back panel mounting) . Series 0B , multipole (4)

ETUDE N°

Echelle

Dessiné	29.06.99	B.C / RMO
Contrôle	07.03.05	RMO / CDE
Modif.	01	07.03.05 / OVU



LEMO

CH-1024 Ecublens

HMG.0B.304.CLNP