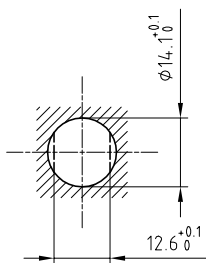


Outer shell	: Brass (UNS C38500)	Chrome plated (FS-QQ-C-320B)
Earthing crown	: Bronze (UNS C54400)	Nickel plated (FS-QQ-N-290A)
Insulator	: PEEK	-
Female contact	: Bronze (UNS C54400)	Gold plated (ISO 4523)
Other metallic parts	: Brass (UNS C38500)	Nickel plated (FS-QQ-N-290A)
Sealing resin	: Epoxy	-
O-rings	: Silicone (MVQ)	-

Panel cut-out



Torque for mounting nut : 5 Nm

**Fixed socket , nut fixing , with key (G) , watertight .
Series OK , multipole (5)**

ETUDE N° E9727

Echelle —	Dessiné	09.06.1994	RMI / RMO
	Contrôle	29.03.2011	JPBA/ATVI
	Modif.	01	29.03.2011/ OVU



LEMO

CH-1024 Ecublens

HGG.OK.305.CLLP