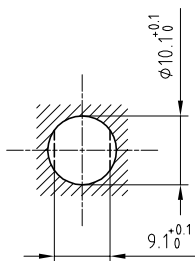


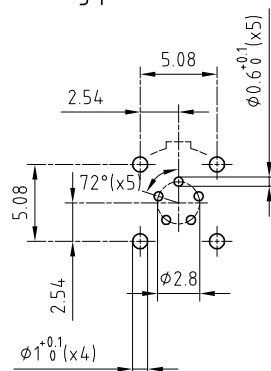
Outer shell	: Aluminium (AA 6262A) or (AA 6023)	Anthracite nickel
Earthing crown	: Cu-Be (UNS C17300)	Nickel plated (FS-QQ-N-290A)
Insulator	: PEEK	-
Female contact	: Bronze (UNS C54400)	Gold plated (ISO 4523)
Conical nut	: Aluminium (AA 6262A) or (AA 6023)	Blue anodized
Ground pin	: Stainless steel (AISI303)	Gold plated (ISO 4523)
Sealing resin	: Epoxy	-
O-ring	: Viton (FPM))	-

Panel cut-out



Torque for mounting nut : 1 Nm

PCB drilling pattern



**Fixed socket , nut fixing , with keys (N)
watertight , for PCB . (Back panel mounting) .
Series 0F , multipole (5)**

ETUDE N° E2324

Echelle —	Dessiné	18.02.2013	OVU / JPBA
	Contrôle	18.02.2013	JPBA / ATVI
	Modif.	00	18.02.2013/ OVU



LEMO

CH-1024 Ecublens

HEN.0F.305.XLNP