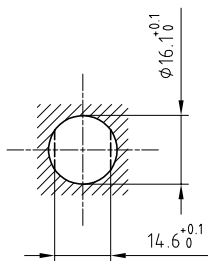


Outer shell	: Brass (UNS C38500)	Chrome plated (SAE AMS 2460)
Earthing crown	: Bronze (UNS C54400)	Nickel plated (SAE AMS QQ N 290)
Insulator	: PEEK	-
Female contact	: Bronze (UNS C54400)	Gold plated (ISO 27874)
Notched nut	: Brass (UNS C38500)	Chrome plated (SAE AMS 2460)
Other metallic part	: Brass (UNS C38500)	Nickel plated (SAE AMS QQ N 290)
Sealing resin	: Epoxy	-
O-rings	: Silicone (MVQ)	-

Panel cut-out



Torque for mounting nut : 7 Nm

PCB drilling pattern

Spanner for notched nut : DCH.91.201.PA

**Fixed socket , nut fixing , with key (G) , watertight . (Back panel mounting) . Series 1K , multipole (14)**

ETUDE N° E1656

Echelle

Dessiné 17.12.09 OVU / JPBA

Contrôle 17.12.09 NHA / CDE

Modif. 01 09.10.2020/ FNI



**LEMO**

CH-1024 Ecublens

**HEG.1K.314.CLLP**