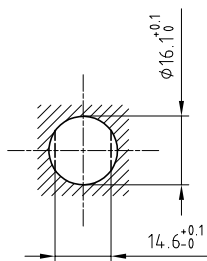


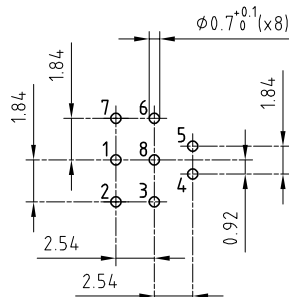
Outer shell	: Brass (UNS C38500)	Chrome plated (FS-QQ-C-320B)
Earthing crown	: Bronze (UNS C54400)	Nickel plated (FS-QQ-N-290A)
Insulator	: PEEK	-
Female contact	: Bronze (UNS C54400)	Gold plated (ISO 27874)
Clip	: Stainless steel	-
Notched nut	: Brass (UNS C38500)	Chrome plated (FS-QQ-C-320B)
Other metallic part	: Brass (UNS C38500)	Nickel plated (FS-QQ-N-290A)
Contact wire	: Brass (UNS C27400)	Tinned
Position insert	: POM	-
Sealing resin	: Epoxy	-
O-rings	: Viton (FPM)	-

Panel cut-out



Torque for mounting nut : 7 Nm

A-A cross-section (PCB drilling pattern)



Spanner for notched nut : DCH.91.201.PA

Fixed socket , nut fixing , with key (G) , vacuumtight , with elbow (90°) contact for PCB . (Back panel mounting) . Series 1K , multipole (8)

ETUDE N° E2429-E7114-E1995-E6158

Echelle	Dessiné	08.01.2020	OVU / NHA
	Contrôle	08.01.2020	NHA / CDE
	Modif.	00	08.01.2020/ OVU



LEMO

LEMO SA
Chemin des Champs-Courbes 28
1024 Ecublens - SWITZERLAND

Tel. (+41 21) 695 16 00
email : info@lemo.com
www.lemo.com

HEG.1K.308.CLVPV