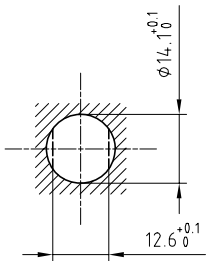


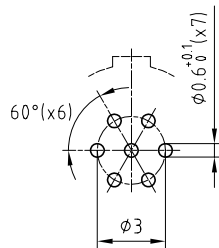
Outer shell	: Brass (UNS C38500)	Chrome plated (FS-QQ-C-320B)
Earthing crown	: Bronze (UNS C54400)	Nickel plated (FS-QQ-N-290A)
Insulator	: PEEK	-
Female contact	: Bronze (UNS C54400)	Gold plated (ISO 4523)
Notched nut	: Brass (UNS C38500)	Chrome plated (FS-QQ-C-320B)
Other metallic part	: Brass (UNS C38500)	Nickel plated (FS-QQ-N-290A)
Sealing resin	: Epoxy	-
O-rings	: Viton (FPM)	-

Panel cut-out



Torque for mounting nut : 5 Nm

PCB drilling pattern



Spanner for notched nut : DCH.91.181.PA

Fixed socket , nut fixing , with key (G) , watertight , for PCB . (Back panel mounting) . Series 0K , multipole (7)

ETUDE N° E9756

Echelle

—

Dessiné	01.06.06	OVU / RMO
Contrôle	01.06.06	RMO / CDE
Modif.	00	01.06.06 / OVU



LEMO

CH-1024 Ecublens

HEG.0K.307.CLNP