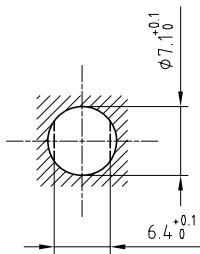


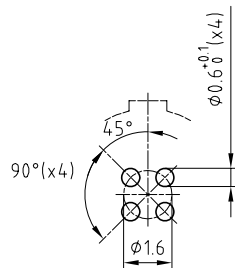
Outer shell	: Brass (UNS C38500)	Chrome plated (FS-QQ-C-320B)
Earthing crown	: Cu-Be (UNS C17300)	Nickel plated (FS-QQ-N-290A)
Insulator	: PEEK	-
Female contact	: Bronze (UNS C54400)	Gold plated (ISO 4523)
Notched nut	: Brass (UNS C38500)	Chrome plated (FS-QQ-C-320B)
Locking washer	: Bronze (UNS C52100)	Nickel plated (FS-QQ-N-290A)
Other metallic part	: Brass (UNS C38500)	Nickel plated (FS-QQ-N-290A)
Sealing resin	: Epoxy	-
O-ring	: Viton (FPM)	-

Panel cut-out



Torque for mounting nut : 1 Nm

PCB drilling pattern



Spanner for notched nut : DCH.91.101.PA

**Fixed socket , nut fixing , with key (G) ,  
vacuumtight , for PCB . (Back panel mounting) .  
Series 00 , multipole (4) (Special contact length)**

ETUDE N° E9973

Echelle	Dessiné	12.04.07	OVU / RMO
	Contrôle	12.04.07	RMO / CDE
	Modif.	00	12.04.07 / OVU



**LEMO**

CH-1024 Ecublens

**HEG.00.304.CLYPV**