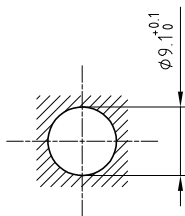


Lead-through shell	: Brass (UNS C38500)	Nickel plated (FS-QQ-N-290A)
Collet	: Brass (UNS C38500)	Nickel plated (FS-QQ-N-290A)
Collet nut	: Brass (UNS C38500)	Nickel plated (FS-QQ-N-290A)
Hexagonal nut	: Brass (UNS C38500)	Nickel plated (FS-QQ-N-290A)
Locking washer	: Bronze (UNS C52100)	Nickel plated (FS-QQ-N-290A)

Panel cut-out



Torque for mounting
hexagonal nut : 2.5 Nm

Spanner for hexagonal nut: DCA.91.161.1TN or
Spanner for hexagonal nut: DCG.91.161.1TN
Flat spanners set : DCP.91.001.TN

Torque for mounting
collet nut : 1.5 Nm

**Lead-through with cable collet .
Series 1S**

Echelle	Dessiné	24.06.09	OVU / JPBA
	Contrôle	24.06.09	JPBA / CDE
	Modif.	00	24.06.09 / OVU

ETUDE N°



LEMO

CH-1024 Ecublens

GSC.1S.290.ND __ __