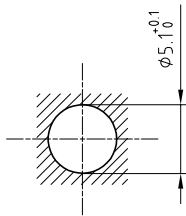


Lead-through shell	: Brass (UNS C38500)	Chrome plated (FS-QQ-C-320B)
Collet nut	: Brass (UNS C38500)	Chrome plated (FS-QQ-C-320B)
Collet	: Brass (UNS C38500)	Nickel plated (FS-QQ-N-290A)
Hexagonal nut	: Brass (UNS C38500)	Nickel plated (FS-QQ-N-290A)
Bend relief	: Polyurethane	Various colors

Panel cut-out



Torque for mounting
hexagonal nut : 1.5 Nm

Flat spanner	: DCP.99.060.TC
Flat spanner	: DCP.99.050.TC
Flat spanners set	: DCP.91.001.TN

Torque for mounting
collet nut : 0.25 Nm

**Lead-through with cable collet .
Series 00**

Echelle	Dessiné	18.05.06	OVU / RMO
	Contrôle	14.10.09	JPBA / CDE
	Modif.	01	14.10.09 / OVU

ETUDE N° E2167



LEMO

CH-1024 Ecublens

GSC.00.290.CD __ _ Z