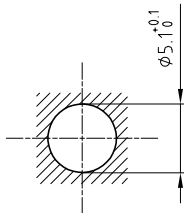


Lead-through shell	: Brass (UNS C38500)	Chrome plated (FS-QQ-C-320B)
Collet nut	: Brass (UNS C38500)	Chrome plated (FS-QQ-C-320B)
Collet	: Brass (UNS C38500)	Nickel plated (FS-QQ-N-290A)
Hexagonal nut	: Brass (UNS C38500)	Nickel plated (FS-QQ-N-290A)

Panel cut-out



Torque for mounting
hexagonal nut : 1 Nm

Flat spanner : DCP.99.050.TC
Flat spanners set : DCP.91.001.TN

Torque for mounting
collet nut : 0.25 Nm

**Lead-through with cable collet and nut .
Series 00**

Echelle	Dessiné	03.04.2019	OVU / NHA
	Contrôle	03.04.2019	NHA / ATVI
	Modif.	00	03.04.2019/ OVU

ETUDE N° E2167-E10199-E1347-E10804-E11135



LEMO

LEMO SA
Chemin des Champs-Courbes 28
1024 Ecublens - SWITZERLAND

Tel. (+41 21) 695 16 00
email : info@lemo.com
www.lemo.com

GSC.00.290.CD _ _