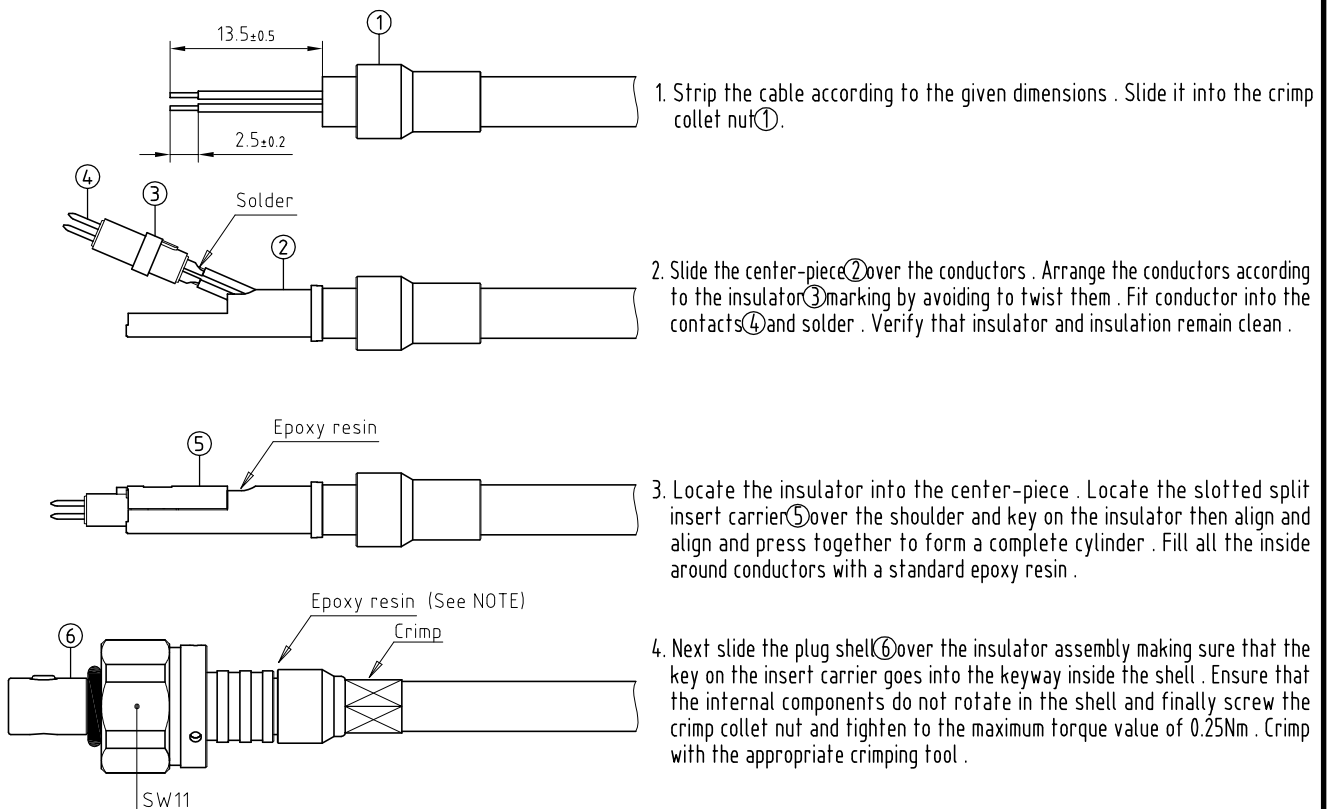
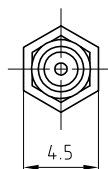


Outer shell	: Brass (UNS C38500)	Chrome plated (FS-QQ-C-320B)
Coupling nut	: Brass (UNS C38500)	Chrome plated (FS-QQ-C-320B)
Retaining ring	: Stainless steel (AISI301)	-
Insulator	: PEEK	-
Male contact	: Brass (UNS C38500)	Gold plated (ISO 27874)
Crimp collet nut	: Brass (UNS C34500)	Nickel plated (FS-QQ-N-290A)
Other metallic parts	: Brass (UNS C38500)	Nickel plated (FS-QQ-N-290A)
Sealing resin	: Epoxy	-
O-rings	: Viton (FPM)	-



NOTE : In order to guaranty performances under high pressure conditions , the space around the thread of the crimp collet nut must be filled with an epoxy resin before tightening .
Coupling nut torque 0.5Nm

Crimping dimension



Crimping tool : DPE.99.125.2K

**Straight plug for non-screened cable crimping , with key (G) .
Series 03 , multipole (4)**

Echelle	Dessiné	16.06.2005	OVU / RMO
	Contrôle	13.02.2015	NHA / CDE
	Modif.	01	13.02.2015/ OVU

ETUDE N° E2410



CH-1024 Ecublens

FVG.03.304.CLAE44