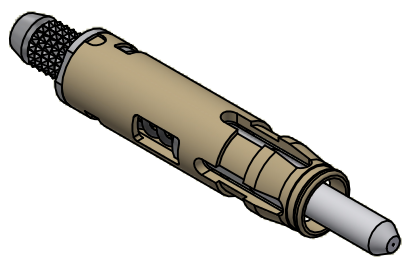
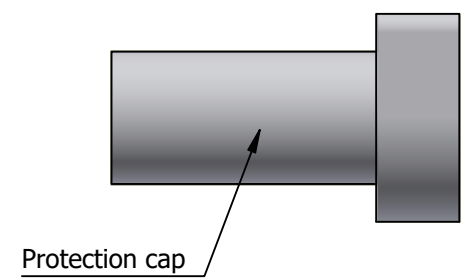
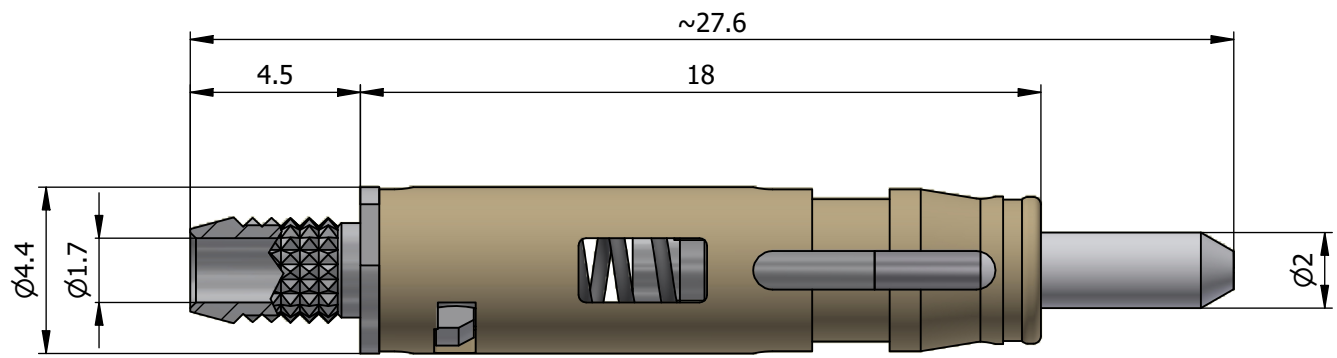


All dimensions are in millimeters (mm)



All additional information are documented on the datasheet (See below link or QR Code)  
[www.lemo.com/pdf/FFS.F2.BB2.LCT10.pdf](http://www.lemo.com/pdf/FFS.F2.BB2.LCT10.pdf)

<p>Datasheet</p>	<p><b>Male fiber optic contact for buffer coated fiber, ferrule bore <math>\varnothing 126\mu\text{m}</math></b></p> <p>Type F2</p>		Drawn	15.11.2001	OVU/RMO
			Checked	12.09.2023	OBAR
	Modified	02	12.09.2023/MARI		
				DO NOT SCALE DRAWING	
<p>LEMO SA Chemin des Champs-Courbes 28 1024 Ecublens - SWITZERLAND</p>		<p>Tel. (+41) 21 695 16 00 email : info@lemo.com www.lemo.com</p>	CD	<p><b>FFS.F2.BB2.LCT10</b></p>	