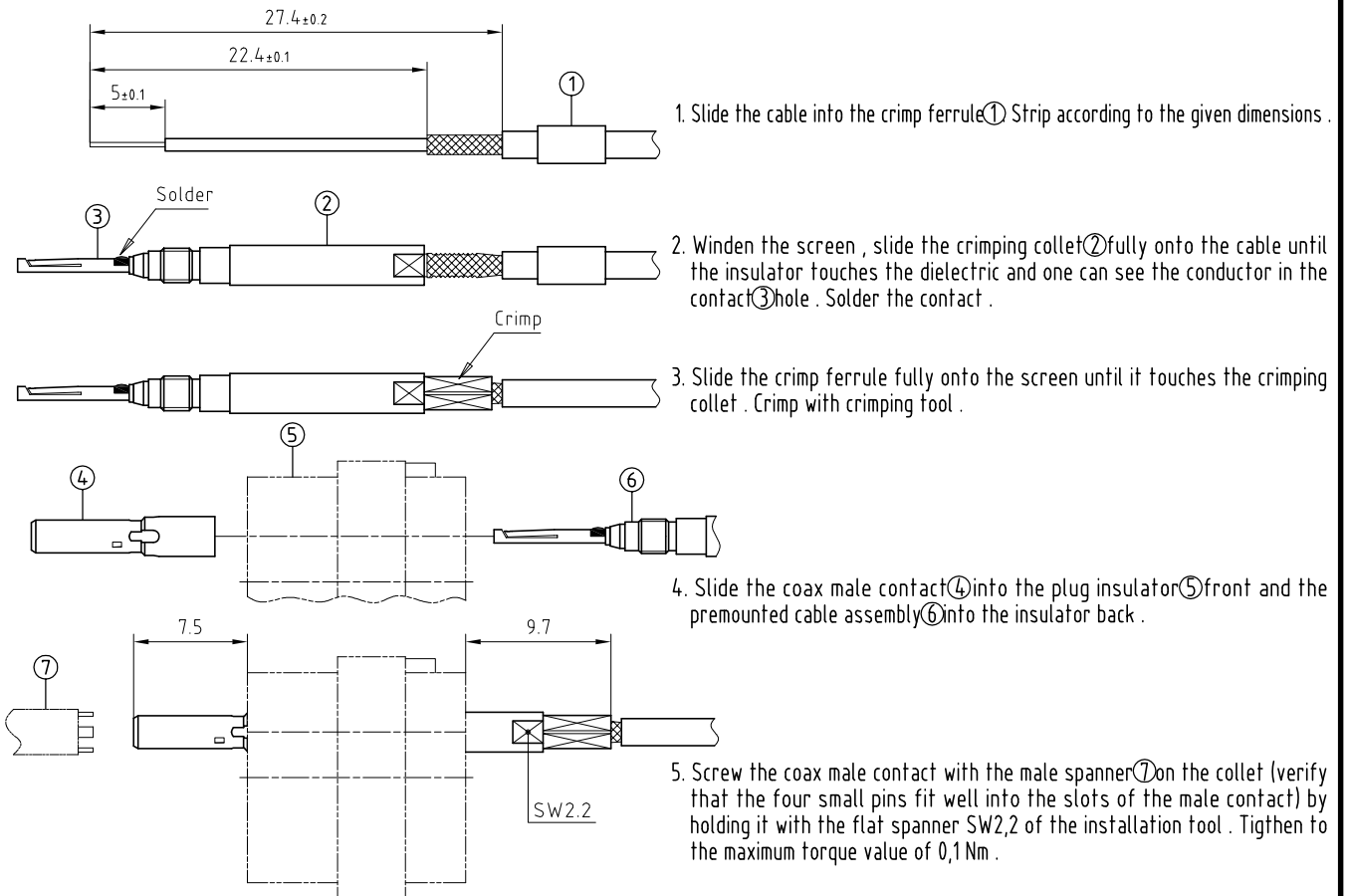
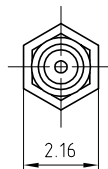


Male sleeve	: Brass (UNS C38500)	Gold plated (ISO 27874)
Insulator	: PEEK	-
Female contact	: Cu-Be (UNS C17300)	Gold plated (ISO 27874)
Crimping collet	: Brass (UNS C38500)	Gold plated (ISO 27874)
Other insulating part	: PEEK	-
Crimp ferrule	: Cu (UNS C18700)	Gold plated (ISO 27874)



Crimping dimension



Crimping tool with dies : DPE.99.002.5K
Installation tool : DCC.91.050.2LA

Crimp ferrule : FFS.1B.160.DA
For cable : RG.178B/U (50Ω)

Male coaxial contact , type E ,
for cable crimping . (Cable group 2)
For series 4B , coaxial (50Ω)

ETUDE N° E6185-E4057-E2391

Echelle —	Dessiné	22.01.2007	OVU / RMO
	Contrôle	04.05.2018	NHA / ATVI
	Modif.	02	04.05.2018/ OVU



LEMO

LEMO SA
Chemin des Champs-Courbes 28
1024 Ecublens - SWITZERLAND

Tel. (+41 21) 695 16 00
email : info@lemo.com
www.lemo.com

FFS.2B.250.DLLE21