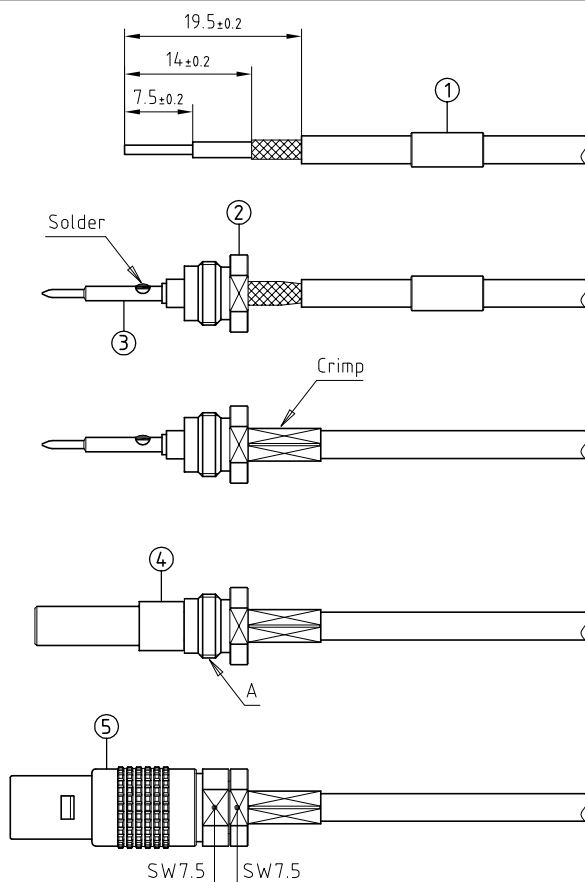


Outer shell	: Brass (UNS C38500)	Chrome plated (FS-QQ-C-320B)
Latch sleeve	: Special brass	Nickel plated (FS-QQ-N-290A)
Insulators	: PTFE	-
Male contact	: Brass (UNS C38500)	Gold plated (ISO 27874)
Crimp ferrule	: Brass (UNS C34500)	Nickel plated (FS-QQ-N-290A)
Crimping collet	: Brass (UNS C38500)	Nickel plated (FS-QQ-N-290A)



1. Slide the cable into the crimp ferrule ① Strip according to the given dimensions .

2. Winden the screen , slide the crimping collet ② fully onto the cable until the insulator touches the dielectric and one can see the conductor in the contact ③ hole and solder .

3. Slide the crimp ferrule fully onto the screen until it touches the crimping collet . Crimp with crimping tool .

4. Slide the insulator ④ on the contact . Apply a small drop of thread lock (Loctite 270 or equivalent) on the crimping collet thread A .

5. Screw the outer shell ⑤ on the premounted cable and tighten with the appropriate tool to the maximum torque value of 0,5Nm .

Crimping dimension



Crimping tool with dies : DPE.99.003.8K
Flat spanner : DCP.0T.110.TN

Crimp ferrule : FFS.00.161.MN
For cables : RG.174A/U (50Ω)
: RG.316/U (50Ω)

Straight plug , for cable crimping .
(Cable group 1) .
Series 0A , coaxial (50Ω)

ETUDE N° E708

Echelle	Dessiné	12.06.2018	OVU / NHA
	Contrôle	12.06.2018	NHA / ATVI
	Modif.	00	12.06.2018/ OVU



LEMO

LEMO SA
Chemin des Champs-Courbes 28
1024 Ecublens - SWITZERLAND

Tel. (+41 21) 695 16 00
email : info@lemo.com
www.lemo.com

FFS.0A.250.CTAE31