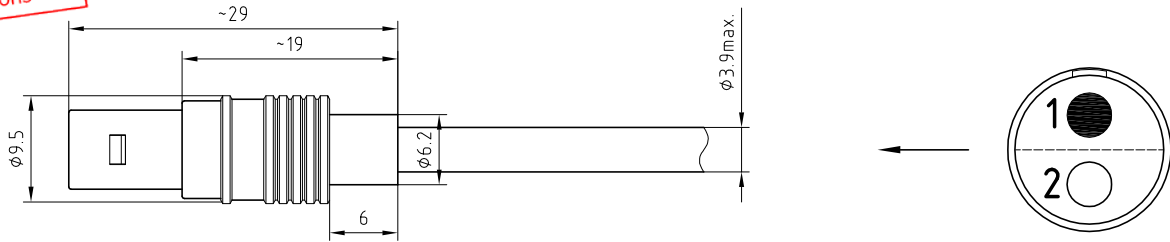
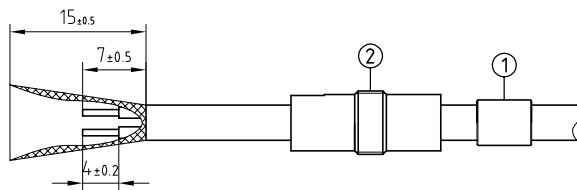


EXCLUSIVITY

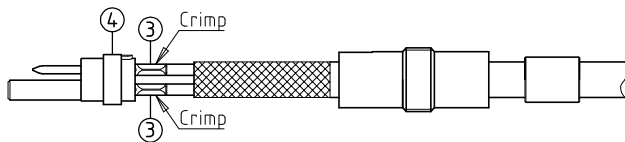
Please contact
sales-hq@lemo.com
for more informations



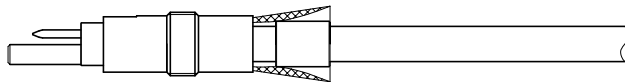
Outer shell	: Brass (UNS C38500)	Chrome plated (FS-QQ-C-320B)
Latch sleeve	: Special brass	Nickel plated (FS-QQ-N-290A)
Insulator	: PEEK	-
Male contact	: Brass (UNS C34500)	Gold plated (ISO 4523)
Female contact	: Bronze (UNS C54400)	Gold plated (ISO 4523)
Crimping sleeve	: Brass (UNS C34500)	Nickel plated (FS-QQ-N-290A)
Crimp ferrule	: Brass (UNS C34500)	Nickel plated (FS-QQ-N-290A)



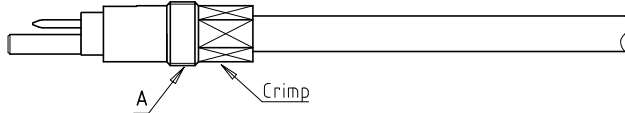
1. Slide the cable into the crimp ferrule ① and the crimping sleeve ②. Strip the cable according to the given dimensions.



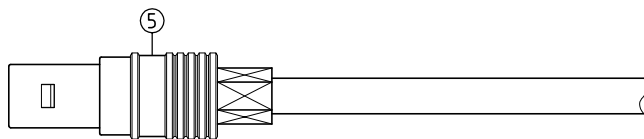
2. Fold back the braid over the cable. Fit the conductors into the contacts ③ and make sure it is visible through its inspection hole in the crimp barrel. Crimp with crimping tool with dies appropriate.



3. Align the key of the insulator ④ with the keyway in the crimping sleeve. Slide the crimp ferrule fully into the braid until it touches the interior crimping sleeve.



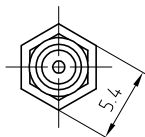
4. Crimp with crimping tool with dies appropriate and cut the braid excess. Apply a small drop of thread lock (Loctite 270 or equivalent) on the crimping sleeve thread A.



5. Screw the straight plug ⑤ on the pre-mounted cable.

Crimping tool with dies	: DPE.99.176.2K	-
Crimp ferrule	: FFJ.0S.160.LN	
Dies for contacts	: DPN.91.121.2K	

Crimping dimension



Straight plug for cable crimping .
Series 0S , multipole (2)

Echelle	Dessiné	11.09.2011	OVU / JPBA
	Contrôle	11.09.2011	JPBA / ATVI
	Modif.	00	11.09.2011 / OVU

ETUDE N° E2605



LEMO

CH-1024 Ecublens

FFJ.0S.302.CLYE39