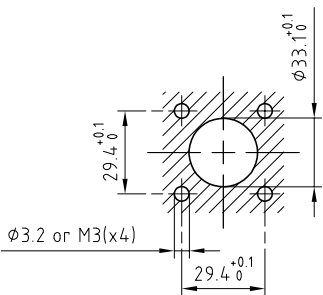


Outer shells	: Aluminium (AA 6262A) or (AA 6023)	Anthracite nickel
protective sleeve	: Aluminium (AA 6262A) or (AA 6023)	Anthracite nickel
Insulator	: PEEK	-
Grommet	: Fluorosilicone (FVMQ)	Red
Female contacts (φ0.7+φ1.3)	: Bronze (UNS C54400)	Gold plated (ISO 27874)
Clip	: Cu-Be (UNS C17200)	-
Clip	: Stainless steel	-
Other metallic part	: Brass (UNS C38500)	Nickel plated (FS-QQ-N-290A)

Panel cut-out



Crimping tool	: DPC.91.701.V
Extractor	: DCF.93.070.4LT
Female contact	: EGW.TM.655.ZZM
Female positioner	: DCE.91.07T.5MVM
Female retention testing tool	: DCK.91.071.0LRM
Female insertion tool	: DCV.07.05M.LA

Crimping tool	: DPC.91.701.V
Extractor	: DCF.93.131.4LT
Female contact (φ1.3)	: EGN.0M.667.ZZM
Female positioner	: DCE.91.130.5MVU
Female retention testing tool	: DCK.91.132.5LRM
Female insertion tool	: DCV.13.05M.LA

**Straight plug , square flange , with keys (X) ,
no screw coupling , 4 holes fixing , with mold stop .
Series 5M , multipole 44LV(φ0.7) + 22LV(φ1.3)**

ETUDE N° E6390-E6367-E6364-E4282

Echelle —	Dessiné	02.07.2019	OVU / NHA
	Contrôle	09.09.2019	NHA / ATVI
	Modif.	01	09.09.2019/ OVU



LEMO

LEMO SA
Chemin des Champs-Courbes 28
1024 Ecublens - SWITZERLAND

Tel. (+41 21) 695 16 00
email : info@lemo.com
www.lemo.com

FAX.5M.366.XRYT44