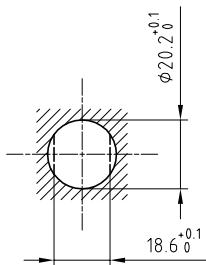


Outer shell	: Brass (UNS C38500)	Chrome plated (FS-QQ-C-320B)
Insulator	: PEEK	-
Male contact	: Brass (UNS C38500)	Gold plated (ISO 4523)
Female contact	: Bronze (UNS C54400)	Gold plated (ISO 4523)
Other metallic parts	: Brass (UNS C38500)	Nickel plated (FS-QQ-N-290A)
O-ring	: Silicone (MVQ)	-

Panel cut-out



Torque for mounting nut : 9 Nm

Fixed plug , non-latching , nut fixing .
Series 2E , multipole (4) $\phi 0.9$ + (3) $\phi 1.3$

Echelle —	Dessiné	13.04.2011	OVU / JPBA
	Contrôle	13.04.2011	JPBA / ATVI
	Modif.	00	13.04.2011 / OVU

ETUDE N°



LEMO

CH-1024 Ecublens

FAA.2E.307.CLA