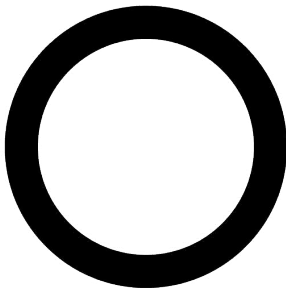
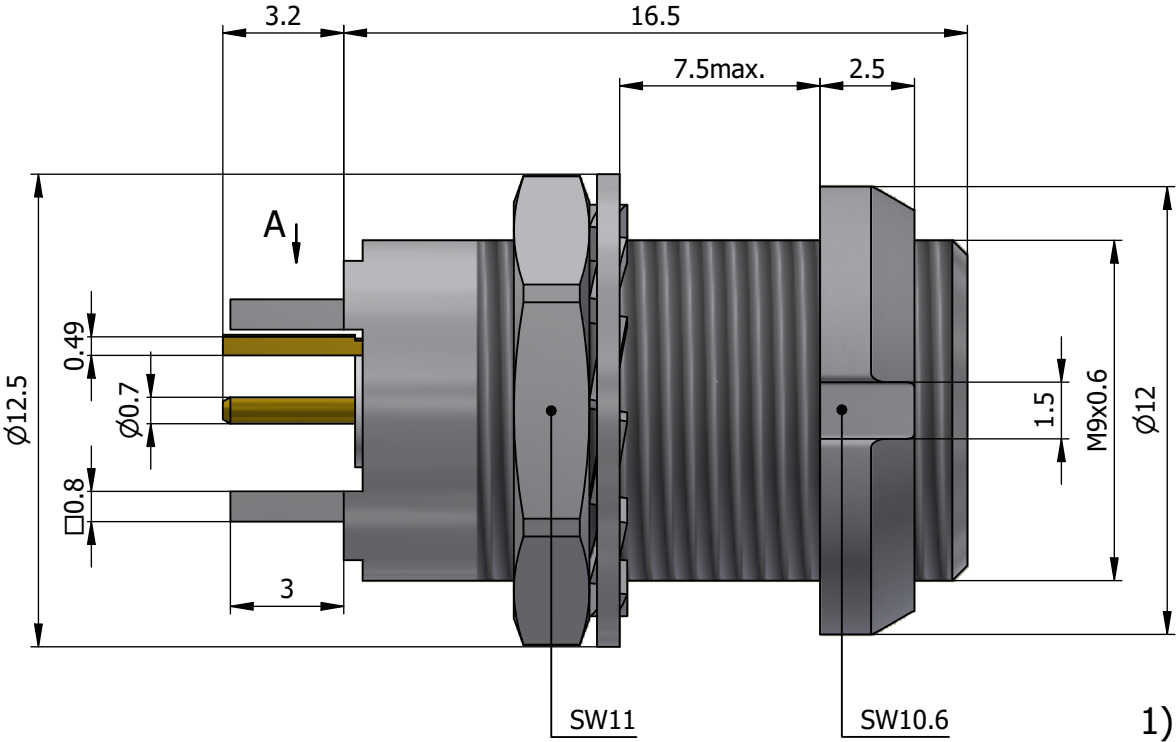
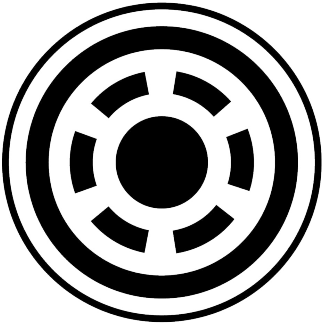


All dimensions are in millimeters (mm)

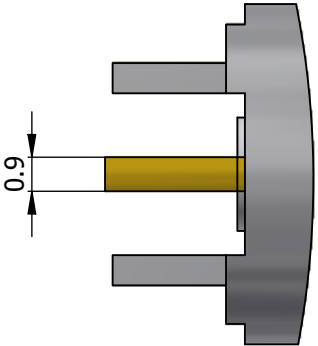
Alignment Key
Front View



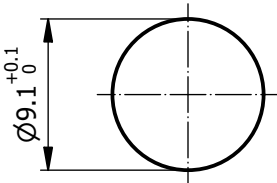
Insert Configuration
Rear View



View A

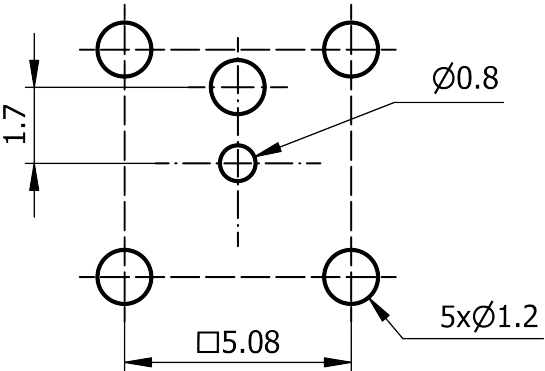


Recommended Panel Cut-Out



Mounting nut torque (Nm)
Metal shell = 2.5
Plastic shell = 0.4

Recommended PCB Layout
PCB Top View



Note:

1) This picture is generic and for illustrative purposes only, and may show different keying, materials, colour, finish, and contact configuration. Minor shape or feature variations to actual item may be present.

All additional information are documented on the datasheet (See below link or QR Code)
www.lemo.com/pdf/EXA.0S.650.NTD.pdf

Model Series Insert Config. Housing Insulator Contact Variant
EXA.0S.650.NTD

Datasheet



**Fixed socket, earthing tag, two nuts, for PCB
(back panel mounting)**
Series 0S



LEMO

LEMO SA
Chemin des Champs-Courbes 28
1024 Ecublens - SWITZERLAND

Tel. (+41) 21 695 16 00
email : info@lemo.com
www.lemo.com

CD

Drawn	08.04.1992	XKO / RMO
Checked	06.09.2023	OBAR
Modified	03	06.09.2023 / MARI
DO NOT SCALE DRAWING		

EXA.0S.650.NTD