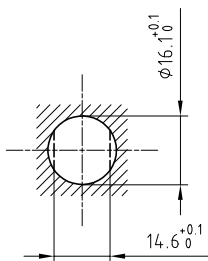


Outer shell	: Brass (UNS C38500)	Chrome plated (SAE AMS 2460)
Earthing crown	: Bronze (UNS C54400)	Nickel plated (SAE AMS QQ N 290)
Insulator	: PEEK	-
Female contact	: Bronze (UNS C54400)	Gold plated (ISO 27874)
Male contact	: Brass (UNS C38500)	Gold plated (ISO 27874)
Other metallic parts	: Brass (UNS C38500)	Nickel plated (SAE AMS QQ N 290)
Sealing resin	: Epoxy	-
O-ring	: Viton (FPM)	-

Panel cut-out



Torque for mounting nut : 7 Nm

**Fixed socket , with two flats on the flange , vacuumtight .
Series 2S , multipole (10)**

ETUDE N°

Echelle	Dessiné	05.05.2010	OVU / JPBA
	Contrôle	20.08.2020	NHA / CDE
	Modif.	01	20.08.2020/ OVU



LEMO

LEMO SA
Chemin des Champs-Courbes 28
1024 Ecublens - SWITZERLAND

Tel. (+41 21) 695 16 00
email : info@lemo.com
www.lemo.com

EWB.2S.310.CLLPV