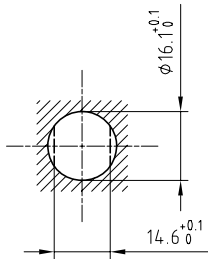


Outer shell	: Brass (UNS C38500)	Chrome plated (FS-QQ-C-320B)
Earthing crown	: Bronze (UNS C54400)	Nickel plated (FS-QQ-N-290A)
Male sleeve	: Brass (UNS C38500)	Gold plated (ISO 4523)
Insulators	: PTFE	-
Female contact	: Bronze (UNS C54400)	Gold plated (ISO 4523)
Hexagonal nut	: Brass (UNS C38500)	Nickel plated (FS-QQ-N-290A)
Other metallic part	: Brass (UNS C38500)	Nickel plated (FS-QQ-N-290A)
O-ring	: Viton (FPM)	-

Panel cut-out



Torque for mounting nut : 7 Nm

**Fixed socket , with nut fixing .
Series 1V , triaxial (50Ω)**

ETUDE N° E6212

Echelle —	Dessiné	04.02.08	OVU / RMO
	Contrôle	04.02.08	RMO / CDE
	Modif.	00	04.02.08 / OVU



CH-1024 Ecublens

EVP.1V.650.CTL