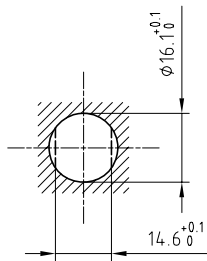


Outer shell	: Brass (UNS C38500)	Chrome plated (FS-QQ-C-320B)
Earthing crown	: Bronze (UNS C54400)	Gold plated (ISO 4523)
Insulator	: PEEK	-
Female contact	: Bronze (UNS C54400)	Gold plated (ISO 4523)
Hexagonal nut	: Brass (UNS C38500)	Nickel plated (FS-QQ-N-290A)
Other metallic part	: Brass (UNS C38500)	Nickel plated (FS-QQ-N-290A)
O-ring	: Viton (FPM)	-

Panel cut-out



Torque for mounting nut : 7 Nm

Fixed socket , with nut fixing .
Series 1V , coaxial (75Ω)

Echelle —	Dessiné	21.03.06	OVU / RMO
	Contrôle	21.03.06	RMO / CDE
	Modif.	00	21.03.06 / OVU

ETUDE N° E6212



LEMO

CH-1024 Ecublens

EVP.1V.275.CLL