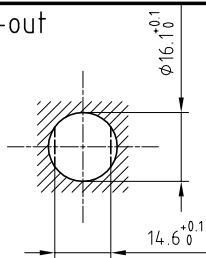


Outer shell	: Brass (UNS C38500)	Chrome plated (FS-QQ-C-320B)
Earthing crown	: Brass (UNS C38500)	Nickel plated (FS-QQ-N-290A)
Insulator	: PEEK	-
Hexagonal nut	: Brass (UNS C38500)	Nickel plated (FS-QQ-N-290A)
Other metallic part	: Brass (UNS C38500)	Nickel plated (FS-QQ-N-290A)
O-ring	: Viton (FPM)	-

Panel cut-out



Torque for mounting nut : 7 Nm

Parts that must be ordered separately :
 Fiber-optic contact ref : PSS.F7.125.LCE23 ferrule hole 125µm
 Fiber-optic contact ref : PSS.F7.126.LCE23 ferrule hole 126µm

Assembly instruction per document n° __

**Fixed socket , nut fixing . with key (G) .
 Series 2W , 2F0(typeF7)**

Echelle —	Dessiné	07.12.2005	OVU / RMO
	Contrôle	09.10.2017	NHA / ATVI
	Modif.	01	09.10.2017/ OVU

ETUDE N° E6212



LEMO

LEMO SA
 Chemin des Champs-Courbes 28
 1024 Ecublens - SWITZERLAND

Tel. (+41 21) 695 16 00
 email : info@lemo.com
 www.lemo.com

EVG.2W.03A.CLZ