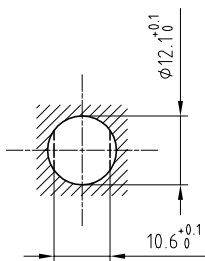


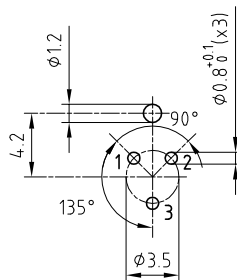
Outer shell	: PEEK	-
Earthing crown	: Bronze (UNS C54400)	Nickel plated (FS-QQ-N-290A)
Insulator	: PEEK	-
Female contact	: Bronze (UNS C54400)	Gold plated (ISO 27874)
Male contact	: Brass (UNS C38500)	Gold plated (ISO 27874)
Earthing tag	: Brass (UNS C38500)	Gold plated (ISO 27874)
Locking washer	: Bronze (UNS C52100)	Nickel plated (FS-QQ-N-290A)
Other metallic part	: Brass (UNS C38500)	Nickel plated (FS-QQ-N-290A)

Panel cut-out



Torque for mounting nut : 0.7 Nm

PCB drilling pattern



Spanner for nut : DCA.91.201.4TN or
Spanner for nut : DCG.91.201.4TN

**Fixed socket with earthing tag , nut fixing ,
for PCB .**

Series 1S , multipole (3)

ETUDE N° E1406-E6296

Echelle —	Dessiné	18.07.2016	OVU / NHA
	Contrôle	12.06.2017	NHA / ATVI
	Modif.	01	12.06.2017/ OVU



LEMO

LEMO SA
Chemin des Champs-Courbes 28
1024 Ecublens - SWITZERLAND

Tel. (+41 21) 695 16 00
email : info@lemo.com
www.lemo.com

ERN.1S.303.GLN