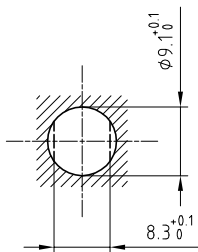


Outer shell	: POM	White
Earthing crown	: Bronze (UNS C54400)	Nickel plated (FS-QQ-N-290A)
Insulator	: PEEK	-
Female contact	: Bronze (UNS C54400)	Gold plated (ISO 4523)
Male contact	: Brass (UNS C38500)	Gold plated (ISO 4523)
Locking washer	: Bronze (UNS C52100)	Nickel plated (FS-QQ-N-290A)
Earthing tag	: Brass (UNS C38500)	Gold plated (ISO 4523)
Other metallic part	: Brass (UNS C38500)	Nickel plated (FS-QQ-N-290A)

Panel cut-out



Torque for mounting nut : 0.4 Nm

Spanner for nut : DCA.91.161.1TN or  
Spanner for nut : DCG.91.161.1TN

**Fixed socket with earthing tag , nut fixing .  
Series OS , multipole (4)**

Echelle —	Dessiné	14.01.2009	OVU / JPBA
	Contrôle	22.11.2012	JPBA / ATVI
	Modif.	01	22.11.2012 / OVU

ETUDE N° E10178-E1958-E10416



**LEMO**

CH-1024 Ecublens

**ERN.OS.304.BLLB**