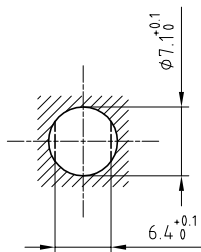


Outer shell	: Brass (UNS C38500)	Chrome plated (FS-QQ-C-320B)
Earthing crown	: Cu-Be (UNS C17300)	Nickel plated (FS-QQ-N-290A)
Insulators	: PEEK	-
Female contact	: Cu-Be (UNS C17300)	Gold plated (ISO 27874)
Male sleeve	: Brass (UNS C34500)	Gold plated (ISO 27874)
Hexagonal nut	: Brass (UNS C38500)	Nickel plated (FS-QQ-N-290A)
Locking washer	: Bronze (UNS C52100)	Nickel plated (FS-QQ-N-290A)
Earthing tags	: Brass (UNS C38500)	Gold plated (ISO 27874)

Panel cut-out



Torque for mounting nut : 1 Nm

Spanner for nut : DCA.91.149.0TN or
Spanner for nut : DCG.91.149.0TN

**Fixed socket with nut fixing , with tags .
Series 00 , triaxial (50 Ω)**

Echelle —	Dessiné	06.09.1993	GS / RMO
	Contrôle	06.01.2015	NHA / ATVI
	Modif.	02	06.01.2015/ OVU

ETUDE N° E6139



CH-1024 Ecublens

ERN.00.650.CLL