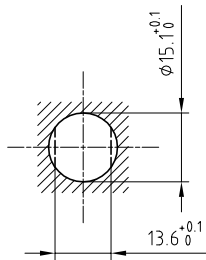


DANGER

Outer shell	: Brass (UNS C38500)	Chrome plated (FS-QQ-C-320B)
Earthing crown	: Bronze (UNS C54400)	Gold plated (ISO 27874)
Insulator	: PTFE	-
Female contact	: Cu-Be (UNS C17300)	Gold plated (ISO 27874)
Notched nut	: Brass (UNS C38500)	Chrome plated (FS-QQ-C-320B)
Locking washer	: Bronze (UNS C52100)	Nickel plated (FS-QQ-N-290A)
Other metallic parts	: Brass (UNS C38500)	Nickel plated (FS-QQ-N-290A)
Label	: Polyester	Yellow

Panel cut-out



Torque for mounting nut : 6 Nm

Spanner for notched nut : DCH.91.201.PA

**Fixed socket , with two nuts .
(Back panel mounting) .
Series 2S , (1) HV(Ø2)**

ETUDE N° E1439

Echelle —	Dessiné	03.05.2018	OVU / NHA
	Contrôle	03.05.2018	NHA / ATVI
	Modif.	00	03.05.2018/ OVU



LEMO

LEMO SA
Chemin des Champs-Courbes 28
1024 Ecublens - SWITZERLAND

Tel. (+41 21) 695 16 00
email : info@lemo.com
www.lemo.com

ERD.2S.408.CTL