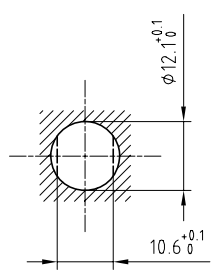


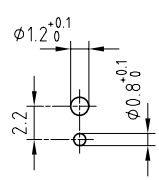
Outer shell	: Brass (UNS C38500)	Chrome plated (FS-QQ-C-320B)
Earthing crown	: Bronze (UNS C54400)	Gold plated (ISO 4523)
Male sleeve	: Brass (UNS C38500)	Gold plated (ISO 4523)
Insulators	: PEEK	-
Female contact	: Bronze (UNS C54400)	Gold plated (ISO 4523)
Notched nut	: Brass (UNS C38500)	Chrome plated (FS-QQ-C-320B)
Earthing washer	: Brass (UNS C27400)	Cu-Sn-Zn alloy
Locking washer	: Bronze (UNS C52100)	Nickel plated (FS-QQ-N-290A)
Other metallic parts	: Brass (UNS C38500)	Nickel plated (FS-QQ-N-290A)

Panel cut-out



Torque for mounting nut : 4.5 Nm

PCB drilling pattern



Spanner for notched nut : DCH.91.161.PA

Fixed socket , with two nuts , for PCB . (Back panel mounting) . Series 1S , triaxial (50Ω)

ETUDE N° E1427-E4048

Echelle	Dessiné	16.01.09	OVU /JPBA
	Contrôle	16.01.09	JPBA/ CDE
	Modif.	00	16.01.09 / OVU



ERD.1S.650.CLN