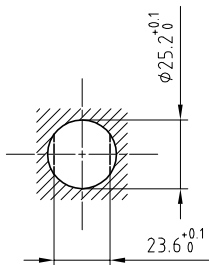


Outer shell	: Aluminium (AA 6262A) or (AA 6023)	Natural anodized
Earthing crown	: Brass (UNS C38500)	Nickel plated (FS-QQ-N-290A)
Insulator	: PEEK	-
Male contact	: Brass (UNS C38500)	Gold plated (ISO 4523)
Female contact	: Bronze (UNS C54400)	Gold plated (ISO 4523)
Hexagonal nut	: Aluminium (AA 6262A) or (AA 6023)	Natural anodized
Locking washer	: Bronze (UNS C52100)	Nickel plated (FS-QQ-N-290A)
Other insulating parts	: PEEK	-
Other metallic parts	: Brass (UNS C38500)	Nickel plated (FS-QQ-N-290A)
Label	: Polyester	Yellow

Panel cut-out



Torque for mounting nut : 12 Nm

Fixed socket , with nut fixing .
Series 4S , (4) HV($\phi 2$)

ETUDE N° E10163

Echelle	Dessiné	10.03.2011	OVU /JPBA
	Contrôle	15.03.2011	JPBA/ATVI
	Modif.	01	15.03.2011/ OVU



LEMO

CH-1024 Ecublens

ERA.4S.434.LJLT