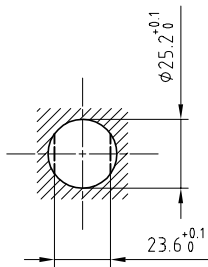


Outer shell	: Brass (UNS C38500)	Chrome plated (FS-QQ-C-320B)
Earthing crown	: Brass (UNS C38500)	Nickel plated (FS-QQ-N-290A)
Insulator	: PTFE	-
Male contact	: Brass (UNS C38500)	Gold plated (ISO 4523)
Female contact	: Bronze (UNS C54400)	Gold plated (ISO 4523)
Locking washer	: Bronze (UNS C52100)	Nickel plated (FS-QQ-N-290A)
Other insulating parts	: PTFE	-
Other metallic parts	: Brass (UNS C38500)	Nickel plated (FS-QQ-N-290A)

Panel cut-out



Torque for mounting nut : 12 Nm

Fixed socket , with nut fixing .  
Series 4S , (3) HV( $\phi 2$ )

Echelle —	Dessiné	13.01.05	OVU / RMO
	Contrôle	13.01.05	RMO / CDE
	Modif.	00	13.01.05 / OVU

ETUDE N°



**LEMO**

CH-1024 Ecublens

**ERA.4S.433.CTL**