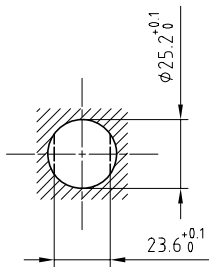


Outer shell	: Brass (UNS C38500)	Chrome plated (FS-QQ-C-320B)
Earthing crown	: Brass (UNS C38500)	Gold plated (ISO 4523)
Insulator	: PTFE	-
Female contact	: Cu-Be (UNS C17300)	Gold plated (ISO 4523)
Locking washer	: Bronze (UNS C52100)	Nickel plated (FS-QQ-N-290A)
Other metallic parts	: Brass (UNS C38500)	Nickel plated (FS-QQ-N-290A)
Label	: Polyester	Yellow

Panel cut-out



Torque for mounting nut : 12 Nm

Fixed socket , with nut fixing .
Series 4S , (1) HV(φ2.5)

ETUDE N°

Echelle —	Dessiné	11.09.07	OVU / RMO
	Contrôle	11.09.07	RMO / CDE
	Modif.	00	11.09.07 / OVU



LEMO

CH-1024 Ecublens

ERA.4S.410.CTL