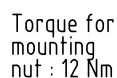
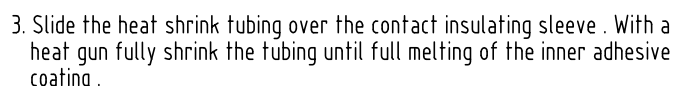
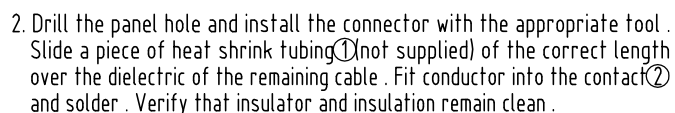
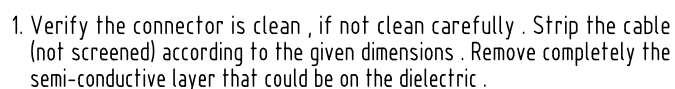


Outer shell	: Brass (UNS C38500)	Chrome plated (FS-QQ-C-320B)
Earthing crown	: Cu-Be (UNS C17200)	Gold plated (ISO 4523)
Insulator	: PEEK	-
Female contact	: Bronze (UNS C54400)	Gold plated (ISO 4523)
Other metallic parts	: Brass (UNS C38500)	Nickel plated (FS-QQ-N-290A)
Other insulating part	: PEEK	-
O-Ring	: Silicone (MVQ)	-
Heat shrink tubing	: Polyolefin	-
Label	: Polyester	Yellow



We recommend the use of a piece of heat shrink tubing an inner melting coating such as :  
RAYCHEM heat shrink tubing ATUM 6/2

Fixed socket , nut fixing .  
Series 3Y , (1) HV( $\phi 1.6$ )

ETUDE N° E6095

Echelle

Dessiné

07.07.1987

MRI / RMO

## Contrôle

20.08.2010

JPBA/ CDE

Modif.	
--------	--

---

01

20.08.2010/ OVU
-----------------



LEMP SA

CH-1024 Ecublens

ERA.3Y.425.CLL