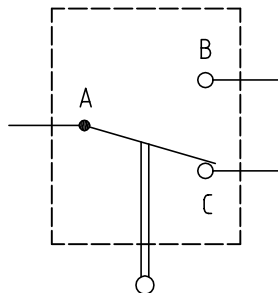


Microswitch holder : Brass (UNS C38500) Chrome plated (FS-QQ-C-320B)  
 Microswitch : Type 1SX1-T (Honeywell) -  
 Screw for microswitch holder : Steel Black

Switching diagram



**Microswitch with holder .**  
**Series 3Y**

ETUDE N° E2582

Echelle

Dessiné

19.05.05

OVU / RMO

Contrôle

19.05.05

RMO / CDE

Modif.

00

19.05.05 / OVU



**LEMO**

CH-1024 Ecublens

**ERA.3Y.260.CZZ**