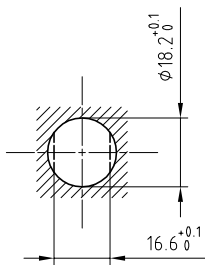


⚡ DANGER ⚡

| | | |
|------------------------|-----------------------|------------------------------|
| Outer shell | : Brass (UNS C38500) | Chrome plated (FS-QQ-C-320B) |
| Earthing crown | : Brass (UNS C38500) | Nickel plated (FS-QQ-N-290A) |
| Insulator | : PEEK | - |
| Female contact (LV) | : Bronze (UNS C54400) | Gold plated (ISO 4523) |
| Male contact (LV) | : Brass (UNS C38500) | Gold plated (ISO 4523) |
| Female contact (HV) | : Bronze (UNS C54400) | Gold plated (ISO 4523) |
| Locking washer | : Bronze (UNS C52100) | Nickel plated (FS-QQ-N-290A) |
| Other insulating parts | : PEEK | - |
| Other metallic parts | : Brass (UNS C38500) | Nickel plated (FS-QQ-N-290A) |
| Label | : Polyester | Yellow |

Panel cut-out



Torque for mounting nut : 9 Nm

Fixed socket , with nut fixing .
Series 3S , (1) HV($\phi 1.3$) + (7) LV($\phi 1.3$)

ETUDE N°

| | | | |
|---------|----------|------------|-----------------|
| Echelle | Dessiné | 27.04.2011 | OVU /JPBA |
| | Contrôle | 27.04.2011 | JPBA/ATVI |
| | Modif. | 00 | 27.04.2011/ OVU |



LEMO

CH-1024 Ecublens

ERA.3S.707.CJL