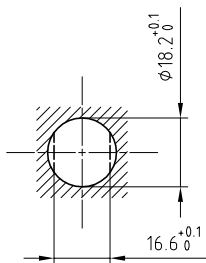


⚡ DANGER ⚡

Outer shell	: Brass (UNS C38500)	Chrome plated (FS-QQ-C-320B)
Earthing crown	: Bronze (UNS C54400)	Gold plated (ISO 4523)
Insulator	: PEEK	-
Male contact	: Brass (UNS C38500)	Gold plated (ISO 4523)
Female contact	: Bronze (UNS C54400)	Gold plated (ISO 4523)
Locking washer	: Bronze (UNS C52100)	Nickel plated (FS-QQ-N-290A)
Other insulating parts	: PEEK	-
Other metallic parts	: Brass (UNS C38500)	Nickel plated (FS-QQ-N-290A)
Label	: Polyester	Yellow

Panel cut-out



Torque for mounting nut : 9 Nm

**Fixed socket , with nut fixing .
Series 3S , (2) HV(φ1.3)**

ETUDE N° E2199

Echelle	Dessiné	03.06.2004	OVU / RMO
	Contrôle	14.08.2012	JPBA / ATVI
	Modif.	01	14.08.2012 / OVU



LEMO

CH-1024 Ecublens

ERA.3S.432.CJL