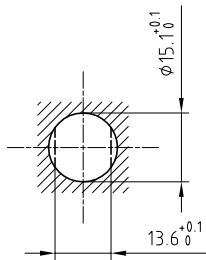


Outer shell	: Brass (UNS C38500)	Chrome plated (FS-QQ-C-320B)
Earthing crown	: Bronze (UNS C54400)	Gold plated (ISO 27874)
Male sleeve	: Brass (UNS C38500)	Gold plated (ISO 27874)
Insulators	: PTFE	-
Femelle contact	: Bronze (UNS C54400)	Gold plated (ISO 27874)
Earthing washer	: Brass (UNS C27400)	Cu-Zn alloy
Locking washer	: Bronze (UNS C52100)	Nickel plated (FS-QQ-N-290A)
Other metallic parts	: Brass (UNS C38500)	Nickel plated (FS-QQ-N-290A)

Panel cut-out



Torque for mounting nut : 6 Nm

Spanner for nut : DCA.91.231.7TN or
Spanner for nut : DCG.91.231.7TN

**Fixed socket , with nut fixing .
Series 2S , triaxial (50Ω)**

ETUDE N° E898-E925

Echelle —	Dessiné	21.02.2018	OVU / NHA
	Contrôle	21.02.2018	NHA / ATVI
	Modif.	00	21.02.2018/ OVU



LEMO

LEMO SA
Chemin des Champs-Courbes 28
1024 Ecublens - SWITZERLAND

Tel. (+41 21) 695 16 00
email : info@lemo.com
www.lemo.com

ERA.2S.650.CTL